



25 Parrot Drive Weir Views VIC

3 2 1

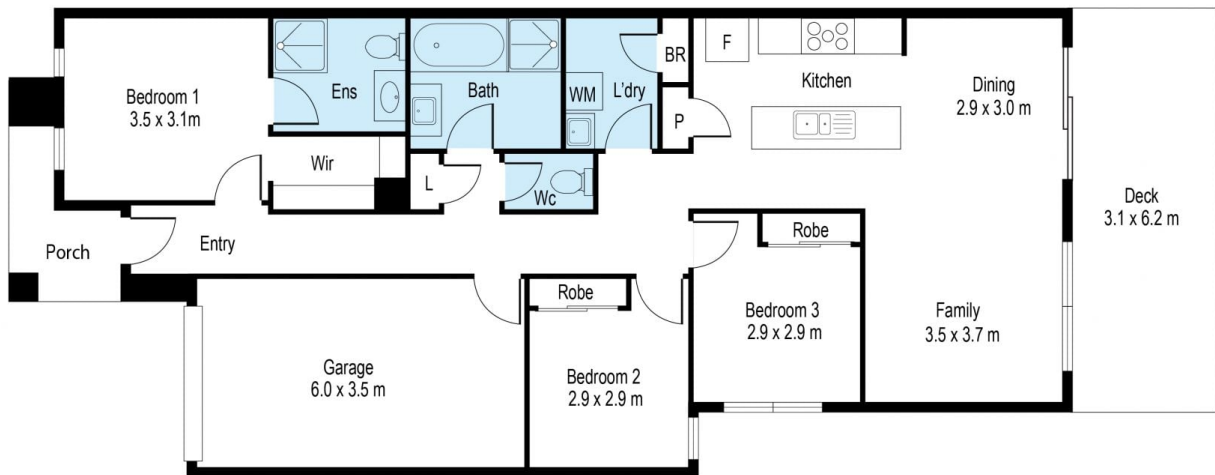
Park Views and Stunning!!!

Ideally located in Weir Views overlooking park lands is this immaculate 2yr old 3 bedroom home that is perfect for downsizers, first home buyers and investors alike. Master bedroom contains a WIR plus ensuite, all remaining rooms contain BIR's, large central bathroom with bath and a well appointed kitchen with 900mm s/s appliances. Added features include, stone benchtops, heating & cooling, stunning outdoor entertainment area with blinds, alarm system and security cameras. Being walking distance to Opalia shopping centre and minutes away from Melton train station and the new the Cobblebank train station. This is a stunning home and an opportunity not to be missed, for further information please contact Paul Muscat on 0410 495 326 or Sam Bindroo on 0404 491 997

Price : \$ 510,000
Land Size : 255 sqm
View : <https://www.ypa.com.au/7402238>



Sam Bindroo
0404 491 997



Scale in metres. Indicative only. Dimensions are approximate. All information contained herein is gathered from sources we believe to be reliable. However we cannot guarantee its accuracy and interested persons should rely on their own enquiries

25 Parrot Drive, Weir Views