



## 31 Mint Boulevard Harkness VIC

4 2 2

Located in the highly sought-after Peppermint Grove Estate in Harkness, sits this magnificent park facing family home on a 514sqm (approx.) block. Displaying an impressive blend of captivating modern features and contemporary style, the generous proportions of this home make for a sensational family domain. Situated within close proximity to schools of all levels, public transport, shops, recreational reserves and so much more this family home is a great place for any growing family.

Upon entry through the gorgeous, upgraded pivot door you are met with 8.5ft` ceilings and floorboards that flow throughout to complement the custom floor plan. Three generously sized bedrooms are situated at the front of the home all containing built in robes and are serviced by a stunning central bathroom showcasing floor to ceiling tiles and stone bench tops. Continuing through the home there

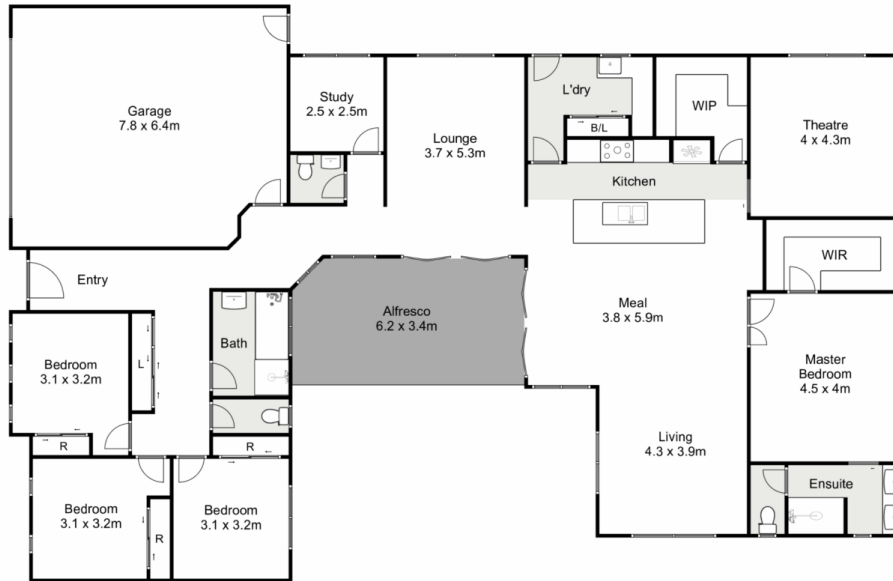
**Price** : \$ 695,500  
**Land Size** : 514 sqm  
**View** : <https://www.ypa.com.au/7400524>



**Shane Spiteri**  
0488 980 115



**Maddison Paans**  
0433 239 783



## 31 Mint Boulevard, Harkness

Ypa

Whilst every attempt has been made to ensure the accuracy of the floor plan contained here, measurements of doors, windows, rooms and any other items are approximate and no responsibility is taken for any error, omission, or mis-statement. This plan is for illustrative purposes only and should be used as such by any prospective purchaser. The services, systems and appliances shown have not been tested and no guarantee as to their operability or efficiency can be given.

