

## 8 Amble Way Weir Views VIC

3  2  2 

Perfectly positioned in the heart of Weir Views in the ever-growing Exford Waters Estate, this stunning dwelling is also close by to the new school St Lawrence of Brindisi, Melton South Train Station, sporting facilities, Opalia Shopping complex and the newly announced future government schools. Showcasing upgrades and high-end finishes throughout this wonderful first home, downsize, or investment is one not to be missed out on!

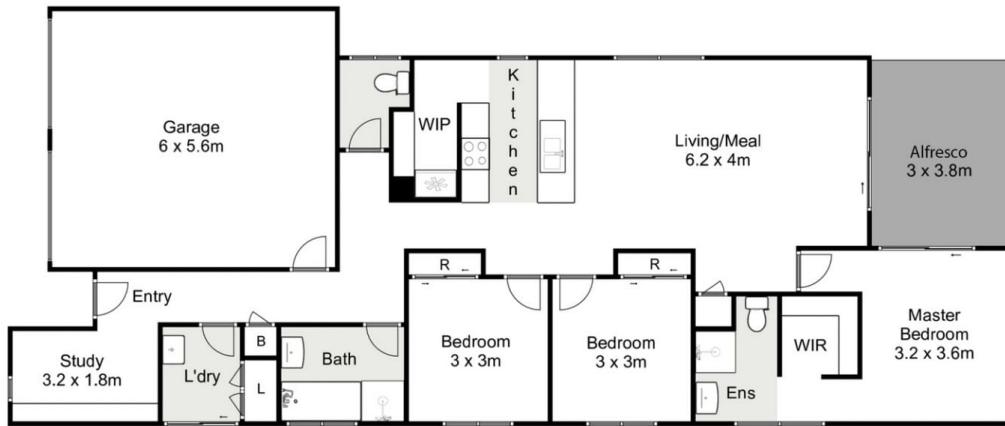
Upon entry you are greeted by beautiful floorboards, 9ft ceilings and an open study area. The heart of this breathtaking modern home features an extraordinary kitchen boasting 20mm stone benchtops, 900mm stainless steel appliances, large bench space, ample storage, dishwasher and a walk-in pantry. This overlooks the open plan meals and living zone providing ample space for entertaining guests and accommodating the whole family.

**Price** : \$ 535,000

**View** : <https://www.ypa.com.au/7400522>



**Ryan Anders**  
0434 900 300



## 8 Amble Way, Weir Views

Whilst every attempt has been made to ensure the accuracy of the floor plan contained here, measurements of doors, windows, rooms and any other items are approximate and no responsibility is taken for any error, omission, or mis-statement. This plan is for illustrative purposes only and should be used as such by any prospective purchaser. The services, systems and appliances shown have not been tested and no guarantee as to their operability or efficiency can be given.

