

105 Westlake Drive Melton West VIC

3 2 1

Located in the highly distinguished Westlake Estate and within walking distance to bus stops, walking tracks, multiple parks, Westlake Reserve and the prestigious Catholic Regional College, this low maintenance property is a true gem.

This wonderful home comprises of three bedrooms all with built in robes, the huge master bedroom features a walk in robe and full ensuite, whilst the remaining bedrooms are serviced by a flawless central bathroom.

The well-designed floorplan perfectly incorporates the large sun-drenched lounge room with the spacious dining area that is overseen by the conveniently situated kitchen, featuring: overhead cupboards, stainless steel appliances, dishwasher, microwave cavity and plenty of benchspace.

Continuing outside there is a large concrete patio, complimented by beautiful established trees and drive through access from the garage.

Price : \$ 498,000

Land Size : 386 sqm

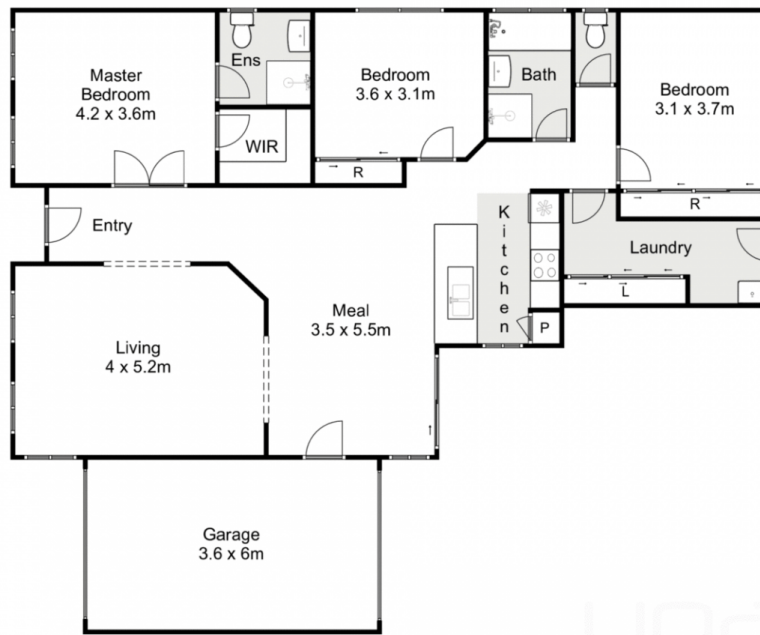
View : <https://www.ypa.com.au/7400513>



Mark Edwards
0422 017 068



Shane Spiteri
0488 980 115



105 Westlake Drive, Melton West

Whilst every attempt has been made to ensure the accuracy of the floor plan contained here, measurements of doors, windows, rooms and any other items are approximate and no responsibility is taken for any error, omission, or mis-statement. This plan is for illustrative purposes only and should be used as such by any prospective purchaser. The services, systems and appliances shown have not been tested and no guarantee as to their operability or efficiency can be given.

