



30 Hilda Drive Brookfield VIC

4 2 2

This gorgeous brand new family home nestled in the heart of Brookfield offers convenience and luxury. Situated close by to all this community has to offer such as schooling, shops, recreational reserves, public transport and so much more

Upon entry you are met with high ceilings that flow throughout the home adding to the luxurious feel. The master bedroom which is situated at the front of the home, features an abundance of natural light and which is further complimented by a walk-in robe and stunning ensuite with an upgraded shower head and inviting colour pallet.

The remaining bedrooms are all great in size and feature built in robes and are serviced by a bright central bathroom continuing with the same quality and upgrades as the ensuite.

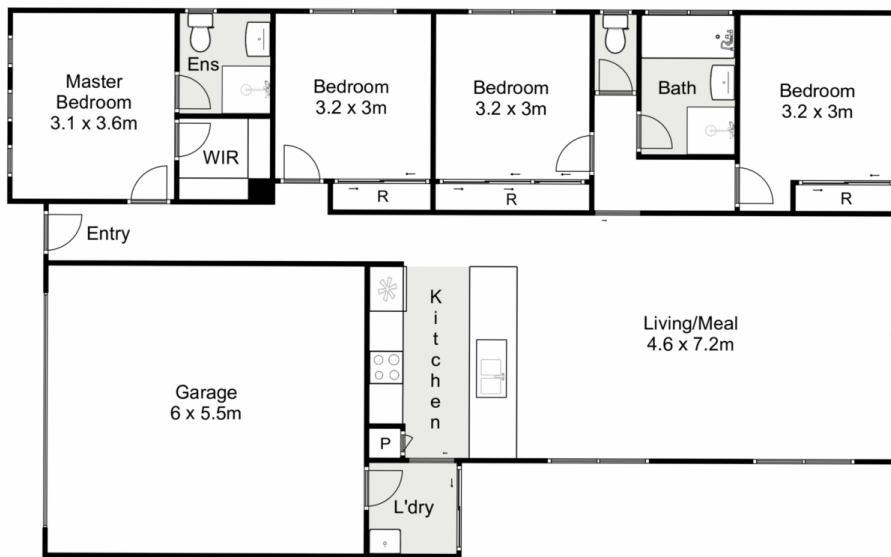
Price : \$ 552,000
Land Size : 448 sqm
View : <https://www.ypa.com.au/7400499>



Shane Spiteri
0488 980 115



Maddison Paans
0433 239 783



30 Hilda Drive, Brookfield

Ypa

Whilst every attempt has been made to ensure the accuracy of the floor plan contained here, measurements of doors, windows, rooms and any other items are approximate and no responsibility is taken for any error, omission, or mis-statement. This plan is for illustrative purposes only and should be used as such by any prospective purchaser. The services, systems and appliances shown have not been tested and no guarantee as to their operability or efficiency can be given.

