

1 Karri Court Brookfield VIC

4 2 2

Tucked away on a highly sought-after picturesque tree lined court in Brookfield, this absolutely stunning family home on a 700m² (approx.) allotment will tick all of your boxes. Providing a rare and unique opportunity to grasp what Brookfield has to offer, take advantage of this prime piece of real estate today. Within close proximity to local shopping complexes, schools of all levels, parks, leisure centre, public transport, freeway access and so much more.

Upon entry you will be immediately impressed by the grand double door entry, higher ceilings and natural light flowing throughout the home highlighting the beautiful upgrades. The large formal living area at the front of the home is complete with a feature wall and double blinds. The grand master bedroom has an abundance of space and features a walk-in robe and gorgeous ensuite including a double

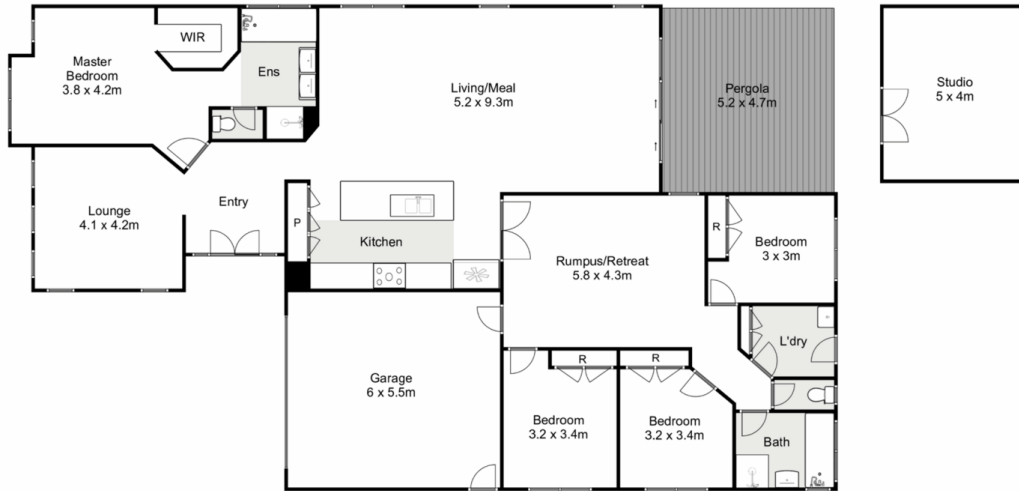
Price : \$ 700,000
Land Size : 700 sqm
View : <https://www.ypa.com.au/7400483>



Shane Spiteri
0488 980 115



Maddison Paans
0433 239 783



1 Karri Court, Brookfield



Whilst every attempt has been made to ensure the accuracy of the floor plan contained here, measurements of doors, windows, rooms and any other items are approximate and no responsibility is taken for any error, omission, or mis-statement. This plan is for illustrative purposes only and should be used as such by any prospective purchaser. The services, systems and appliances shown have not been tested and no guarantee as to their operability or efficiency can be given.

