



24 Campaspe Crescent Brookfield VIC

3 1 2

Situated on a fantastic block of 652m² (approx.), this home has endless possibilities including side access with enough space to store trucks, caravans or build further shedding. Located in a quiet location in Brookfield close by to all amenities including shops, public transport, all levels of schooling and so much more, this property is the perfect opportunity for all buyers entering the property market.

Upon entering this welcoming home there is a large open plan living area which wraps around to incorporate the dining/study leading seamlessly through to the well-equipped kitchen. Boasting a dishwasher, oven, cooktop and plenty of bench and cupboard space overlooking the second living and/or meals zone.

The spacious master bedroom features a walk-in robe and access to the two-way central bathroom with a larger

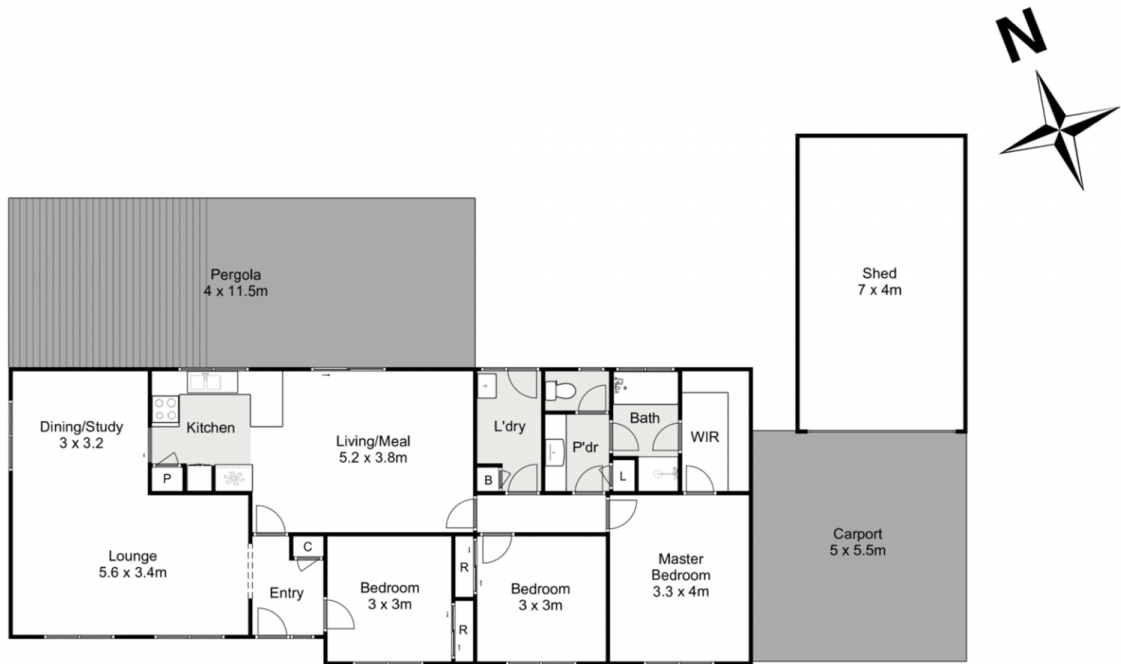
Price : \$ 539,000
Land Size : 652 sqm
View : <https://www.ypa.com.au/7400477>



Shane Spiteri
0488 980 115



Maddison Paans
0433 239 783



24 Campaspe Crescent, Brookfield

Whilst every attempt has been made to ensure the accuracy of the floor plan contained here, measurements of doors, windows, rooms and any other items are approximate and no responsibility is taken for any error, omission, or mis-statement. This plan is for illustrative purposes only and should be used as such by any prospective purchaser. The services, systems and appliances shown have not been tested and no guarantee as to their operability or efficiency can be given.

