



8 Argyll Circuit Melton West VIC

3 2 2

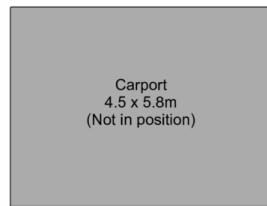
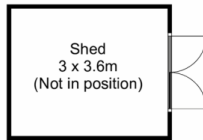
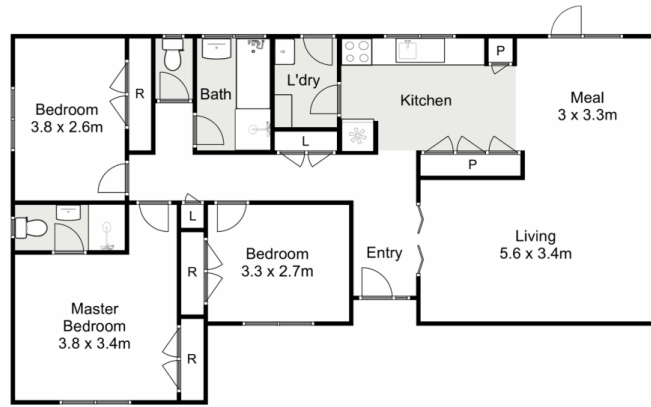
Perfectly cared for and situated on a 573m² (approx.) allotment in a fantastic convenient location stands this gorgeous three-bedroom home with ample space for your family. Located just around the corner from popular schools, and only a short distance from shopping complexes, public transport, walking tracks and parks, this family home is ideally situated to suit any buyer.

This neat and tidy home is sure to impress immediately, with a beautifully manicured front garden and welcoming façade, you will feel right at home. Upon entering this home, you are met with a huge living area perfect to host the entire family. This fantastic floorplan also provides a study space perfect for homework or working from home. The kitchen is bright with ample storage, 600mm oven and cooktop, which overlooks the meals area.

Price : \$ 494,000
Land Size : 573 sqm
View : <https://www.ypa.com.au/7400457>



Shane Spiteri
0488 980 115



8 Argyll Circuit, Melton West

YPA

Whilst every attempt has been made to ensure the accuracy of the floor plan contained here, measurements of doors, windows, rooms and any other items are approximate and no responsibility is taken for any error, omission, or mis-statement. This plan is for illustrative purposes only and should be used as such by any prospective purchaser. The services, systems and appliances shown have not been tested and no guarantee as to their operability or efficiency can be given.

