



## 2/24 Henry Street Melton VIC

3 1 2

Perfectly located in the heart of Melton close by to shops, restaurants, bus stops, schools, freeway access, walking tracks and parks, this property presents the perfect opportunity for first home buyers, downsizers and investors alike.

Comprising of three generously sized bedrooms all equipped with built in robes and serviced by a beautiful central bathroom. The heart of the home consists of a well-appointed kitchen featuring stainless steel appliances and ample storage/bench space overlooking the spacious living and dining area.

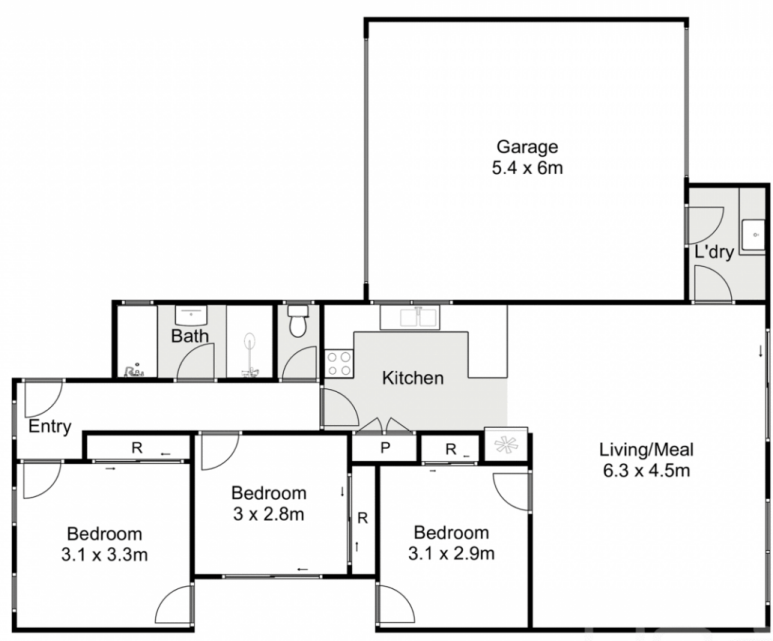
This home further includes: ducted heating, double lock-up carport with internal and drive through access, low maintenance yard and so much more.

**Price** : \$ 355,000

**View** : <https://www.ypa.com.au/7400447>



**Mark Edwards**  
0422 017 068



## 2/24 Henry Street, Melton

Whilst every attempt has been made to ensure the accuracy of the floor plan contained here, measurements of doors, windows, rooms and any other items are approximate and no responsibility is taken for any error, omission, or mis-statement. This plan is for illustrative purposes only and should be used as such by any prospective purchaser. The services, systems and appliances shown have not been tested and no guarantee as to their operability or efficiency can be given.

