



15 Momba Close Kurunjang VIC

3  1  1 

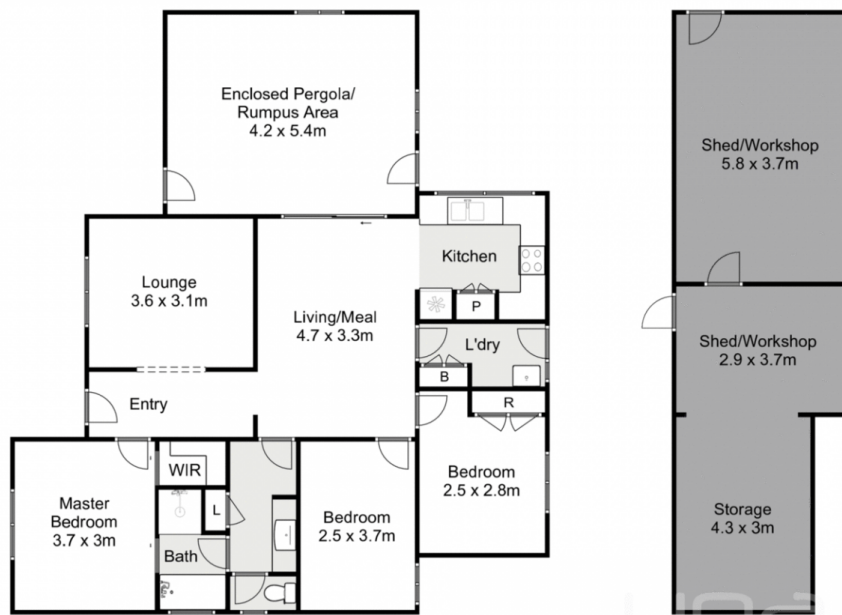
Situated in a beautiful quite location, this wonderful home has everything you need and more. Located in a popular and desirable location of Kurunjang close by to all amenities such as bus stops, convenience stores, sporting facilities, local schools of all levels and recreational parks, making it the ideal home for first home buyers, families and investors.

Upon entering this great size home you are greeted by a spacious and light filled living area perfect to accommodate a growing family, this flows through to the well-appointed kitchen and meals area; containing 600mm oven and cooktop, ample storage and plenty of bench space. The master bedrooms complete with a walk in robe and a two way bathroom with separate toilet and powder room, perfect to accommodate guests. The two remaining bedrooms situated at the rear of the home are both great in

Price : \$ 420,000
Land Size : 530 sqm
View : <https://www.ypa.com.au/7400436>



Shane Spiteri
0488 980 115



15 Momba Close, Kurunjang

Whilst every attempt has been made to ensure the accuracy of the floor plan contained here, measurements of doors, windows, rooms and any other items are approximate and no responsibility is taken for any error, omission, or mis-statement. This plan is for illustrative purposes only and should be used as such by any prospective purchaser. The services, systems and appliances shown have not been tested and no guarantee as to their operability or efficiency can be given.

