



2/19 Christina Crescent Kurunjang VIC

3 2 1

Situated on a great allotment of 428m² (approx.) within walking distance to schools, shops, public transport, parks and walking tracks, this property is sure to suit investors and owner occupiers alike.

Price : \$ 500,000

View : <https://www.ypa.com.au/7400428>

Consisting of three great sized bedrooms, master bedroom featuring WIR and stunning ensuite, whilst the remaining two bedrooms all have built in robes and are serviced by a bright central bathroom

The spacious light filled kitchen with stainless appliances, 600mm gas cooktop and lots of bench space perfectly incorporates the open plan living and dining areas which flows seamlessly out to the backyard.

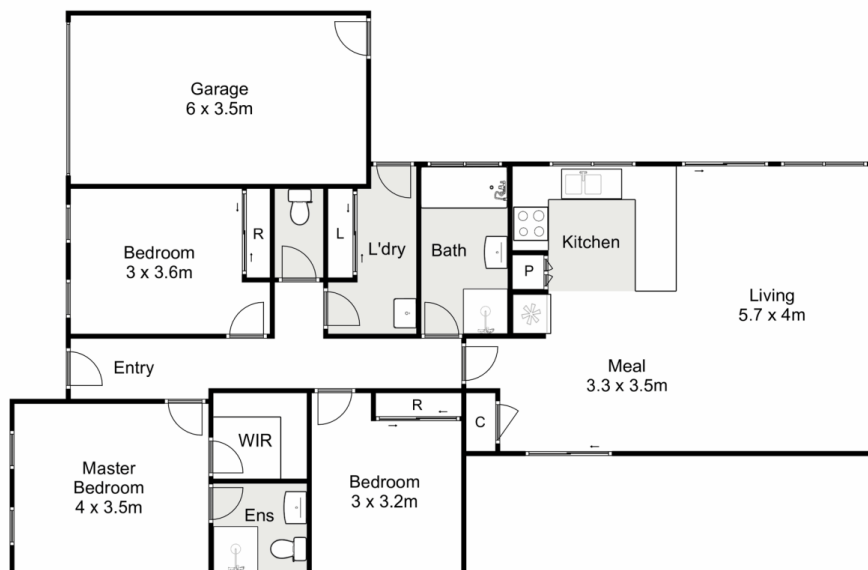
Continuing outside you will find a spacious yard with established gardens and potential for side access.



Mark Edwards
0422 017 068



Shane Spiteri
0488 980 115



2/19 Christina Crescent, Kurunjang

Ypa

Whilst every attempt has been made to ensure the accuracy of the floor plan contained here, measurements of doors, windows, rooms and any other items are approximate and no responsibility is taken for any error, omission, or mis-statement. This plan is for illustrative purposes only and should be used as such by any prospective purchaser. The services, systems and appliances shown have not been tested and no guarantee as to their operability or efficiency can be given.

