

13 Cottrell Street Weir Views VIC

3 2 1

This high-quality home features an impressive blend of captivating modern features and contemporary style. Located in the highly sought-after Weir Views, nearby to parks, walking tracks, schools of all levels, shopping districts, train station and so much to come there is so many reasons why everyone is flooding to Weir Views.

A gorgeous front façade and meticulously maintained front gardens welcome you towards this stunning home. Upon entry you are met with gorgeous floorboards that flow throughout the home creating a sense of warmth.

The master bedroom situated at the front of the home offers optimal space complete with a large walk-in robe and stunning ensuite with stone bench tops. The remaining two bedrooms both feature built in robes and are serviced by a stunning central bathroom that carries the same quality and

Price : \$ 500,000

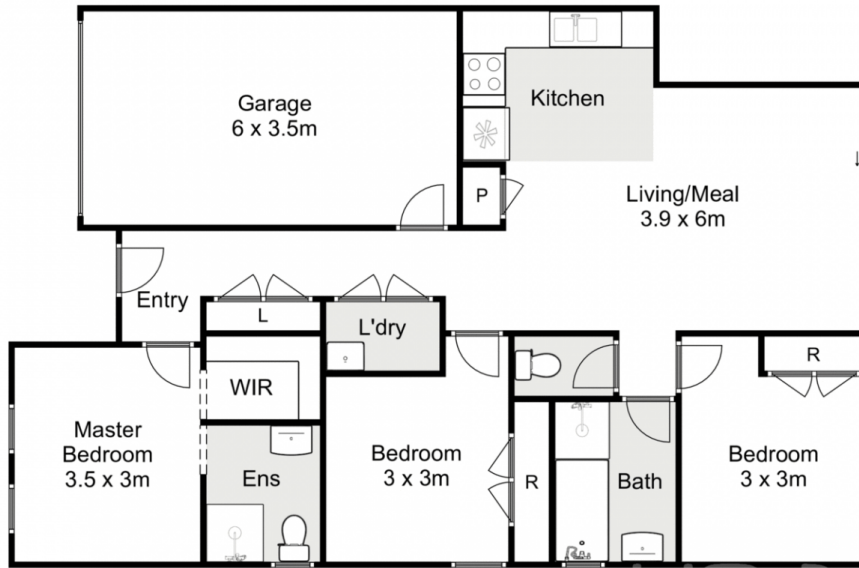
View : <https://www.ypa.com.au/7400425>



Shane Spiteri
0488 980 115



Maddison Paans
0433 239 783



13 Cottrell Street, Weir Views

Whilst every attempt has been made to ensure the accuracy of the floor plan contained here, measurements of doors, windows, rooms and any other items are approximate and no responsibility is taken for any error, omission, or mis-statement. This plan is for illustrative purposes only and should be used as such by any prospective purchaser. The services, systems and appliances shown have not been tested and no guarantee as to their operability or efficiency can be given.

