



## 20 Gloaming Ride Kurunjang VIC

4 2 6

Positioned in the most desirable pocket of Kurunjang, this beautiful property is one of a kind and offers a potential subdivision opportunity (STCA).

Situated on a huge allotment of 4092m<sup>2</sup> (approx.) allotment, this home offers an impressive design that is eye-catching from the moment you arrive.

Comprising of 4 generous size bedrooms all featuring built in robes, (master bedroom complete with ensuite and walk in robe), large family lounge upon entry, spacious kitchen with ample cupboard space, 900mm cook top, double oven and dishwasher, overlooking your adjoining meals space, a bonus rumpus room featuring an inbuilt bar for entertaining and a bright central bathroom including spa bath.

Making your way outside, here you will find the outdoor

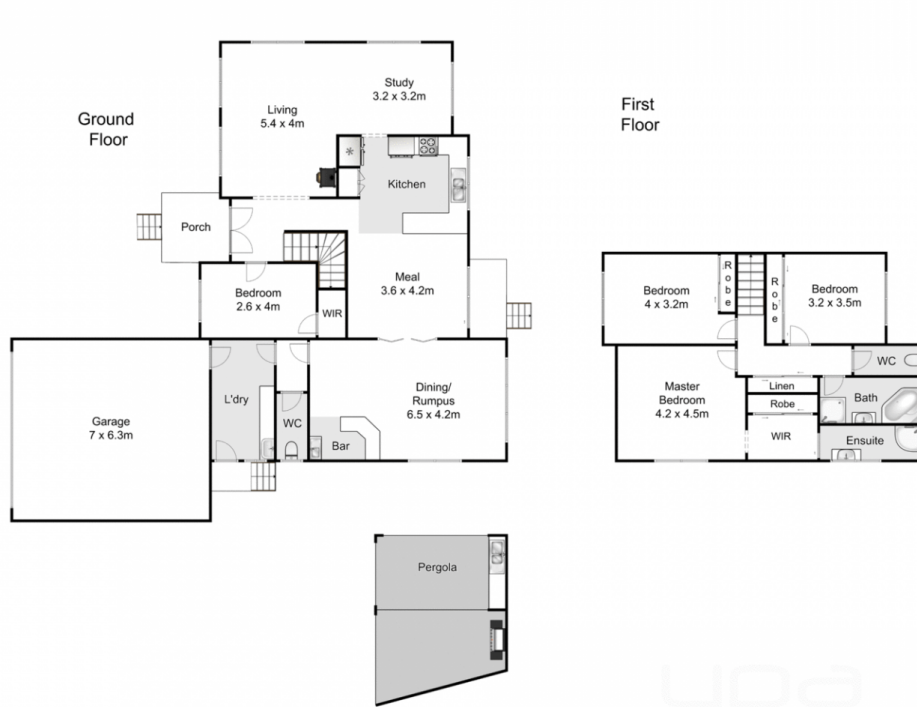
**Price** : \$ 1,190,000  
**Land Size** : 4092 sqm  
**View** : <https://www.ypa.com.au/7400404>



**Ryan Anders**  
0434 900 300



**Mark Edwards**  
0422 017 068



## 20 Gloaming Ride, Kurunjang

Whilst every attempt has been made to ensure the accuracy of the floor plan contained here, measurements of doors, windows, rooms and any other items are approximate and no responsibility is taken for any error, omission, or mis-statement. This plan is for illustrative purposes only and should be used as such by any prospective purchaser. The services, systems and appliances shown have not been tested and no guarantee as to their operability or efficiency can be given.

