



31 Barleygrass Crescent Brookfield VIC

3 2 1

Take advantage of this stunning home, in the heart of Brookfield close by to all amenities such as schools of all levels, public transport and freeway access.

This low maintenance home, with open plan home has everything you could possibly need for a first home buyer, downsizer or investor alike.

As you enter this beautiful home you are greeted by soaring 9ft ceilings that continue throughout the home. Comprising of three generously sized bedrooms with built in robes, the master bedroom features a large walk in robe and beautiful ensuite, whilst the remaining bedrooms are serviced by an equally impressive central bathroom.

The heart of the home features a large open plan family and meals area which perfectly incorporates the modern kitchen with ample benchspace and stainless-steel

Price : \$ 490,000

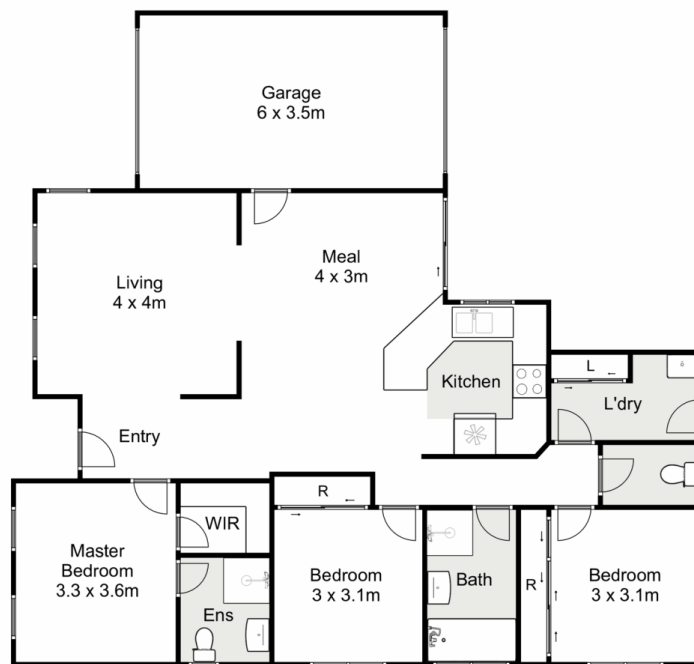
View : <https://www.ypa.com.au/7400398>



Mark Edwards
0422 017 068



Shane Spiteri
0488 980 115



31 Barleygrass Crescent, Brookfield

Ypa

Whilst every attempt has been made to ensure the accuracy of the floor plan contained here, measurements of doors, windows, rooms and any other items are approximate and no responsibility is taken for any error, omission, or mis-statement. This plan is for illustrative purposes only and should be used as such by any prospective purchaser. The services, systems and appliances shown have not been tested and no guarantee as to their operability or efficiency can be given.

