

1 Citreus Circuit Brookfield VIC

3 2 1

Situated in a perfect Brookfield location, close to local parks, walking tracks, schools and public transport, this fantastic property is ready for you to move straight in with no work to do!

This inviting home comprises of three great sized bedrooms with built in robes, (master bedroom with bright ensuite and walk in wardrobe), whilst the remaining bedrooms serviced by a stunning central bathroom. The beautiful and well-equipped kitchen is complimented by quality stainless steel appliances, ample storage and overlooks the spacious open plan living and meals area that leads perfectly outdoors.

Moving outside, the backyard offers low maintenance living with extensive concreting and direct access to carport.

Price : \$ 445,000

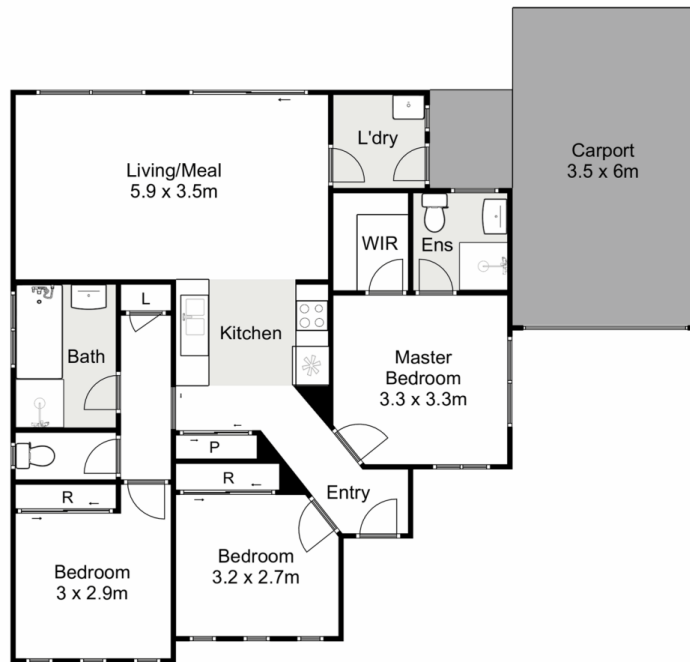
View : <https://www.ypa.com.au/7400388>



Shane Spiteri
0488 980 115



Mark Edwards
0422 017 068



1 Citreus Circuit, Brookfield

Ypa

Whilst every attempt has been made to ensure the accuracy of the floor plan contained here, measurements of doors, windows, rooms and any other items are approximate and no responsibility is taken for any error, omission, or mis-statement. This plan is for illustrative purposes only and should be used as such by any prospective purchaser. The services, systems and appliances shown have not been tested and no guarantee as to their operability or efficiency can be given.

