



57 Wittick Street Darley VIC

4 2 2

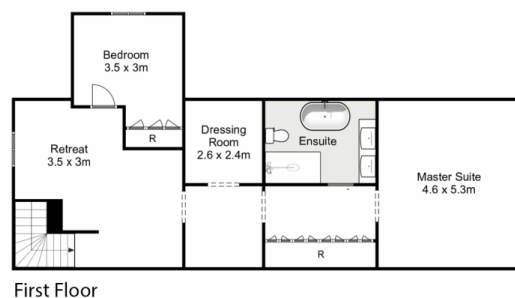
Designed and built for today's ultra-modern lifestyle, this stunning home offers an impressive blend of innovative features with a luxury contemporary style, showcasing a glamorous ambience throughout, featuring spectacular picturesque views. Situated on a huge 824m² (approx.) allotment with an extravagant façade, surrounded by ironbark decking and an exceptionally beautiful, landscaped front and rear yard, presents to you this four bedrooms plus study masterpiece you don't want to miss out on.

Upon entering this delightful home, you are welcomed by a grand entrance featuring engineered timber flooring, upgraded wool carpets, high ceilings and quality upgraded window furnishing. The ground floor of the home consists of a two spacious bedrooms with built in robes. The spectacular bright main bathroom features stunning

Price : \$ 1,002,500
Land Size : 824 sqm
View : <https://www.ypa.com.au/7400387>



Shane Spiteri
0488 980 115



57 Wittick Street, Darley

YPA

Whilst every attempt has been made to ensure the accuracy of the floor plan contained here, measurements of doors, windows, rooms and any other items are approximate and no responsibility is taken for any error, omission, or mis-statement. This plan is for illustrative purposes only and should be used as such by any prospective purchaser. The services, systems and appliances shown have not been tested and no guarantee as to their operability or efficiency can be given.

