



## 7 Mossman Grove Cobblebank VIC

4 🏠 2 🚗 2 🚗

Situated in the heart of the Atherstone Estate, in close proximity to sporting grounds, walking tracks, Cobblebank Train Station, freeway access, shopping precinct and schools of all levels, this stunning upgraded family home offers luxury living with the added comfort of updated and upgraded fixtures and fittings throughout.

**Land Size** : 448 sqm  
**View** : <https://www.ypa.com.au/7400380>

With stunning street appeal welcoming you towards the front door with an intriguing entrance opening into the gorgeous home. Upon entry you are met with a wide entrance hall further complimented by floorboards and high ceilings that flow throughout the home. The front formal lounge is spacious and light filled offering a separate space for your family to enjoy. Following this there is an impressive theatre room perfect for those nights in.

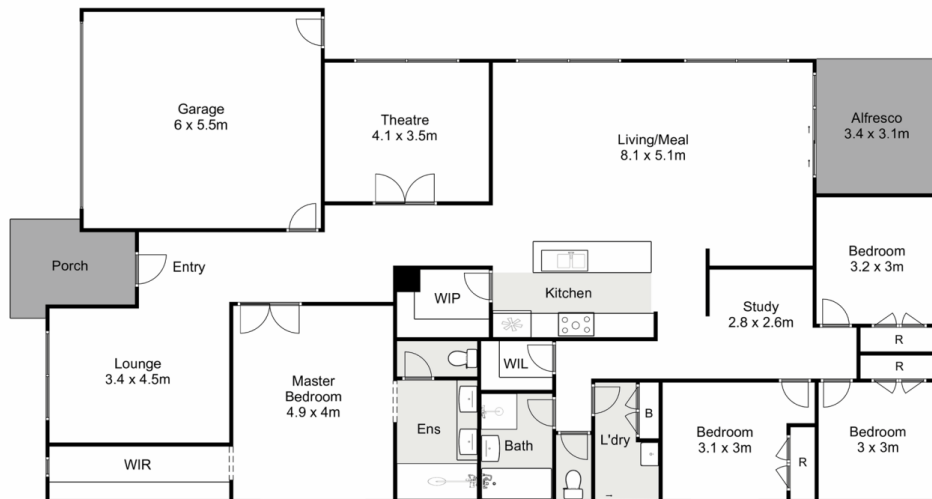


**Maddison Paans**  
**0433 239 783**



**Shane Spiteri**  
**0488 980 115**

The master bedroom is absolutely breathtaking with no



## 7 Mossman Grove, Cobblebank

ypa

Whilst every attempt has been made to ensure the accuracy of the floor plan contained here, measurements of doors, windows, rooms and any other items are approximate and no responsibility is taken for any error, omission, or mis-statement. This plan is for illustrative purposes only and should be used as such by any prospective purchaser. The services, systems and appliances shown have not been tested and no guarantee as to their operability or efficiency can be given.

