



100 First Avenue Melton South VIC

4 1 2

Situated on a large 599m² (approx.), this stunning home has been immaculately renovated and meticulously cared for by its current owners, making it the perfect opportunity to move straight in.

Price : \$ 535,000
Land Size : 599 sqm
View : <https://www.ypa.com.au/7400371>

Located in a prime Melton South position in Residential Growth Zone (RGZ1) offering potential for future sub-division (STCA) and within close proximity to all levels of schooling, parks, freeway access, Melton Train Station and Melton South shopping precinct, the positioning of this home is second to none.

Showcasing impeccable street appeal, finished with manicured gardens and extra wide driveway, this family home will leave you awe from first glance.

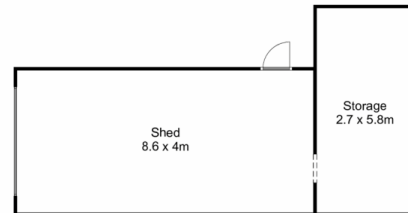
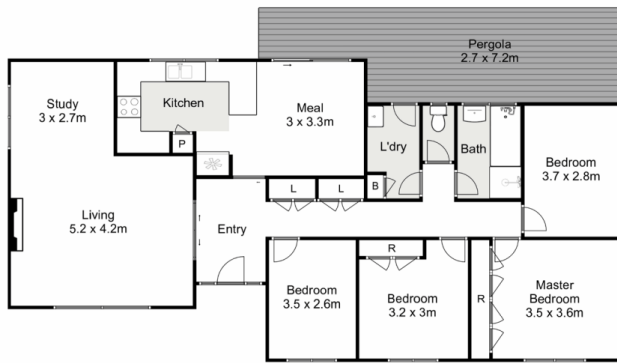
Upon entry you are greeted by a bright foyer that flows into



Shane Spiteri
0488 980 115



Mark Edwards
0422 017 068



100 First Avenue, Melton South

Ypa

Whilst every attempt has been made to ensure the accuracy of the floor plan contained here, measurements of doors, windows, rooms and any other items are approximate and no responsibility is taken for any error, omission, or mis-statement. This plan is for illustrative purposes only and should be used as such by any prospective purchaser. The services, systems and appliances shown have not been tested and no guarantee as to their operability or efficiency can be given.

