



30 Fellows Street Weir Views VIC

4 2 2

Situated in close proximity to all levels of schooling, parks, walking tracks, public transport and future development, this property offers great value for the astute investor with a current lease until February 2023.

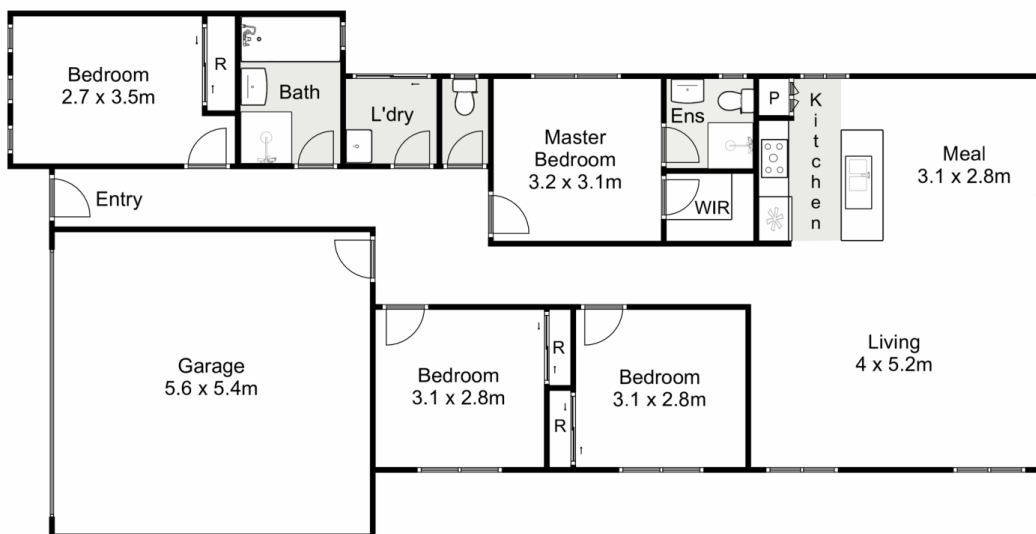
This home comprises of four generously sized bedrooms, master bedroom complete with walk in robe and bright ensuite, with the remaining three bedrooms all containing built in robes and serviced by a stunning central bathroom. The modern kitchen featuring: ample storage space, dishwasher and stainless steel appliances overlooks the large open plan living and meals zone with pleasing views of the spacious back yard containing plenty of grass for kids or pets to run and play.

Additional features include; ducted heating, split system cooling, quality window furnishings, double garage with

Price : \$ 510,000
Land Size : 359 sqm
View : <https://www.ypa.com.au/7400359>



Mark Edwards
0422 017 068



30 Fellows Street, Weir Views

Ypa

Whilst every attempt has been made to ensure the accuracy of the floor plan contained here, measurements of doors, windows, rooms and any other items are approximate and no responsibility is taken for any error, omission, or mis-statement. This plan is for illustrative purposes only and should be used as such by any prospective purchaser. The services, systems and appliances shown have not been tested and no guarantee as to their operability or efficiency can be given.

