



120 Dalray Crescent Kurunjang VIC

4 2 2

This beautiful family home is situated on a generous 542m² (approx.) allotment and perfectly located in the highly sought-after area of Kurunjang just moments away from all amenities, including public transport, schools of all levels, shops, parklands, walking tracks, and easy freeway access. This wonderful property is a great opportunity to enter the property market, upsize or invest.

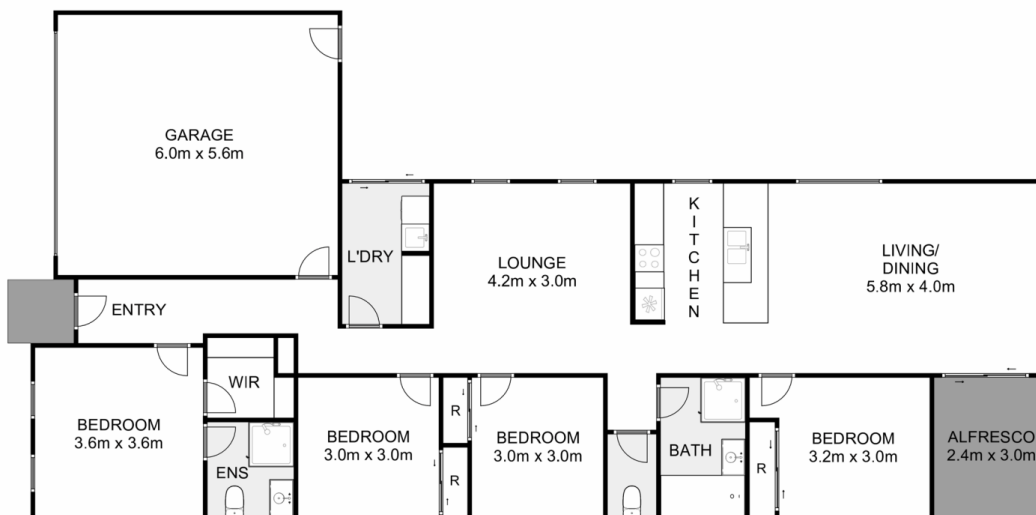
Stepping into this impressive home you immediately appreciate the space on offer. This delightful residence will have you feeling right at home from the moment you walk in. At the front of the home sits a large master bedroom showcasing ample light featuring a bright ensuite and a spacious walk-in robe. The formal lounge provides an abundant of space perfect to host the whole family and guests.

Moving into the heart of the home features the well-equipped kitchen complemented with stainless-steel

Price : \$ 599,000
Land Size : 542 sqm
View : <https://www.ypa.com.au/7400358>



Shane Spiteri
0488 980 115



120 Dalray Crescent, Kurunjang

Ypa

Whilst every attempt has been made to ensure the accuracy of the floor plan contained here, measurements of doors, windows, rooms and any other items are approximate and no responsibility is taken for any error, omission, or mis-statement. This plan is for illustrative purposes only and should be used as such by any prospective purchaser. The services, systems and appliances shown have not been tested and no guarantee as to their operability or efficiency can be given.

