



## 2 Scarborough Crescent Harkness VIC

3  1  2 

Situated on a generous 402m<sup>2</sup> allotment located in a quiet, perfect family location and within a short distance to schools of all levels, shopping complexes, recreational parks, public transport and so much more, this home is a must to inspect. This charming home is ideal for first home buyers, downsizers, or investors.

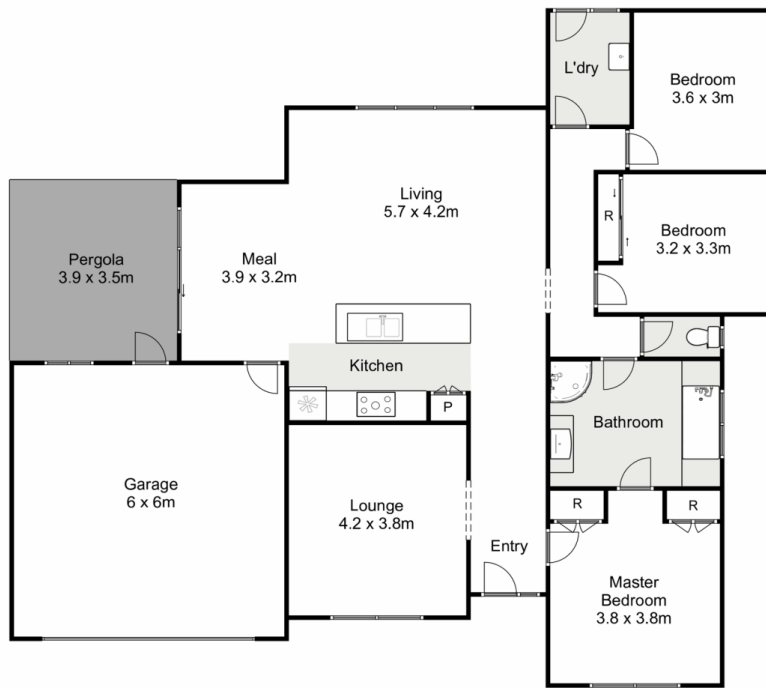
Upon entering this beautiful home you are greeted by a large and light filled living area perfect to accommodate a growing family. The impressive well-appointed kitchen in the heart of the home contains an island bench with 600mm oven and cooktop, ample storage and bench space all overlooking the large dining and second living area.

This property comprising of three good size bedrooms, most containing built in robes that are serviced by a stunning large central bathroom with all the upgrades and

**Price** : \$ 520,000  
**Land Size** : 402 sqm  
**View** : <https://www.ypa.com.au/7400351>



**Shane Spiteri**  
0488 980 115



## 2 Scarborough Crescent, Harkness

YPA

Whilst every attempt has been made to ensure the accuracy of the floor plan contained here, measurements of doors, windows, rooms and any other items are approximate and no responsibility is taken for any error, omission, or mis-statement. This plan is for illustrative purposes only and should be used as such by any prospective purchaser. The services, systems and appliances shown have not been tested and no guarantee as to their operability or efficiency can be given.

