

19 Cromarty Circuit Darley VIC

4 🛏 2 🚿 2 🚗

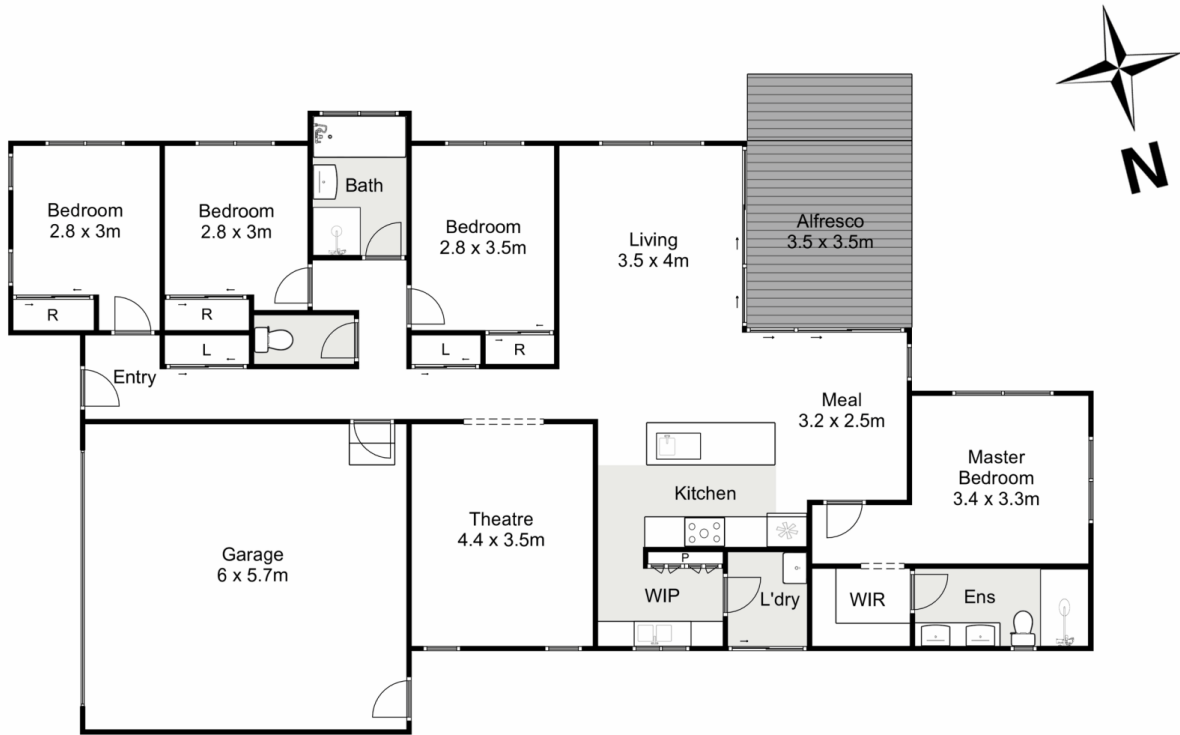
Situated on a huge 679m² (approx.) allotment this impressive, designed home has all the incredible factors you've been searching for with immaculately landscaped gardens sure to impress any buyer, the generous proportions of this home make for a sensational family lifestyle. Located in Darley's most distinguished address with only short distance to schooling, public transport, freeway access and all amenities, this home is one certainly not to be missed.

Entering this beautiful residence, you are welcomed by high ceilings, downlights and floorboards throughout. This is a truly spectacular home that will exceed all your expectations. The study or fourth bedroom located at the front of the home includes a great size built in robe and double block out blinds. The two remaining bedrooms contain built in robes and are serviced by an impressive

Price : \$ 735,000
Land Size : 697 sqm
View : <https://www.ypa.com.au/7400329>



Shane Spiteri
0488 980 115



19 Cromarty Circuit, Darley

ypa

Whilst every attempt has been made to ensure the accuracy of the floor plan contained here, measurements of doors, windows, rooms and any other items are approximate and no responsibility is taken for any error, omission, or mis-statement. This plan is for illustrative purposes only and should be used as such by any prospective purchaser. The services, systems and appliances shown have not been tested and no guarantee as to their operability or efficiency can be given.

