



10 Eyre Street Melton South VIC

3 2 5

Situated in a quite picturesque and sought-after area, this property is sure to impress all buyers. Being within close proximity to parks, shops, walking tracks, public transport and zoned schools, this property offers not only a perfect family living environment but a wonderful area to enjoy all that the beautiful Melton South community has to offer.

From the secured front entrance with electric gate, manicured front lawn and gardens, to the inviting front façade you will be calling this home before you even head inside.

As you enter you will be amazed by the quality that continues throughout. With a calming colour scheme and spacious areas guiding you through the home. Situated to the front of the home are the bedrooms which all are all spacious and contain built in robes which are serviced by a

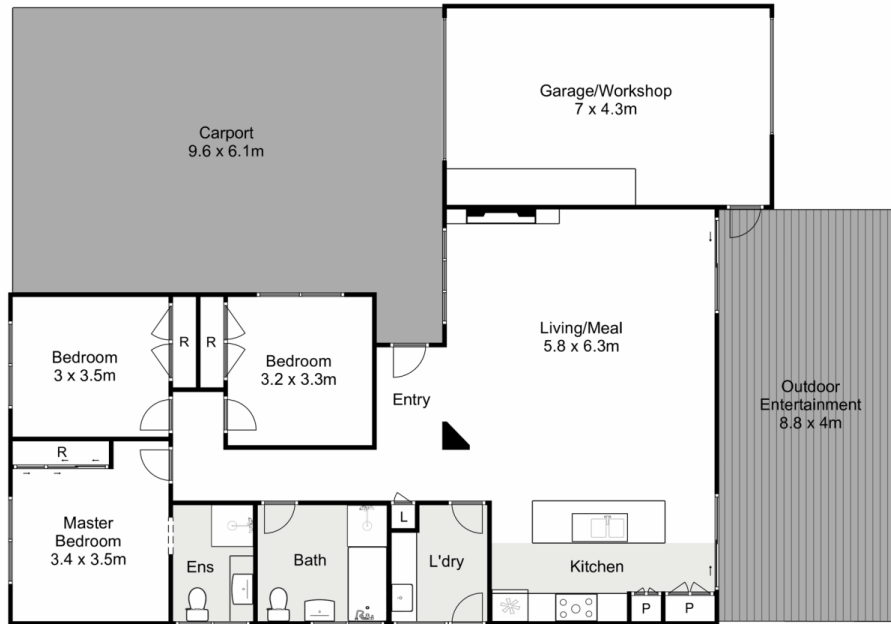
Price : \$ 633,000
Land Size : 568 sqm
View : <https://www.ypa.com.au/7400319>



Shane Spiteri
0488 980 115



Maddison Paans
0433 239 783



10 Eyre Street, Melton South

Ypa

Whilst every attempt has been made to ensure the accuracy of the floor plan contained here, measurements of doors, windows, rooms and any other items are approximate and no responsibility is taken for any error, omission, or mis-statement. This plan is for illustrative purposes only and should be used as such by any prospective purchaser. The services, systems and appliances shown have not been tested and no guarantee as to their operability or efficiency can be given.

