



## 14 Faircroft Drive Brookfield VIC

4 2 2

This beautiful family home is situated on a generous 528m<sup>2</sup> (approx.) allotment and perfectly located in the highly sought-after area of Brookfield. This family friendly home is perfectly located within close proximity to schools, shops, Melton South Train Station, walking tracks and so much more, making it the ideal opportunity for families, first home buyers and investors alike.

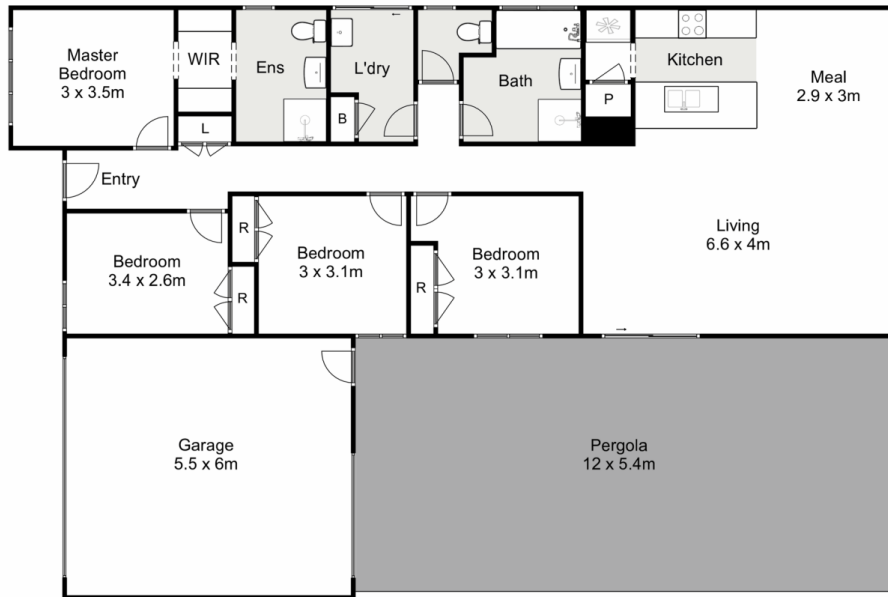
Stepping into this impressive home you immediately appreciate the space on offer. The grand master bedroom features large his/hers walk in wardrobes and a spacious ensuite. The three remaining bedrooms are all generously sized, containing built in robes and are serviced by a bright and modern central bathroom.

Moving through this well- appointed home there is a huge open plan living and dining area, providing ample space for

**Price** : \$ 615,000  
**Land Size** : 528 sqm  
**View** : <https://www.ypa.com.au/7400315>



**Kate McGlone**  
0401 853 244



## 14 Faircroft Drive, Brookfield

Ypa

Whilst every attempt has been made to ensure the accuracy of the floor plan contained here, measurements of doors, windows, rooms and any other items are approximate and no responsibility is taken for any error, omission, or mis-statement. This plan is for illustrative purposes only and should be used as such by any prospective purchaser. The services, systems and appliances shown have not been tested and no guarantee as to their operability or efficiency can be given.

