



20 Turpentine Road Brookfield VIC

3 2 2

Situated in one of Brookfield's most sought after locations, sits this beautiful residence on an expansive 571m² allotment (approx.) and is within walking distance to schools and pre-schools, leafy and tranquil walking tracks and only a short drive to Woodgrove Shopping Centre and Freeway Access.

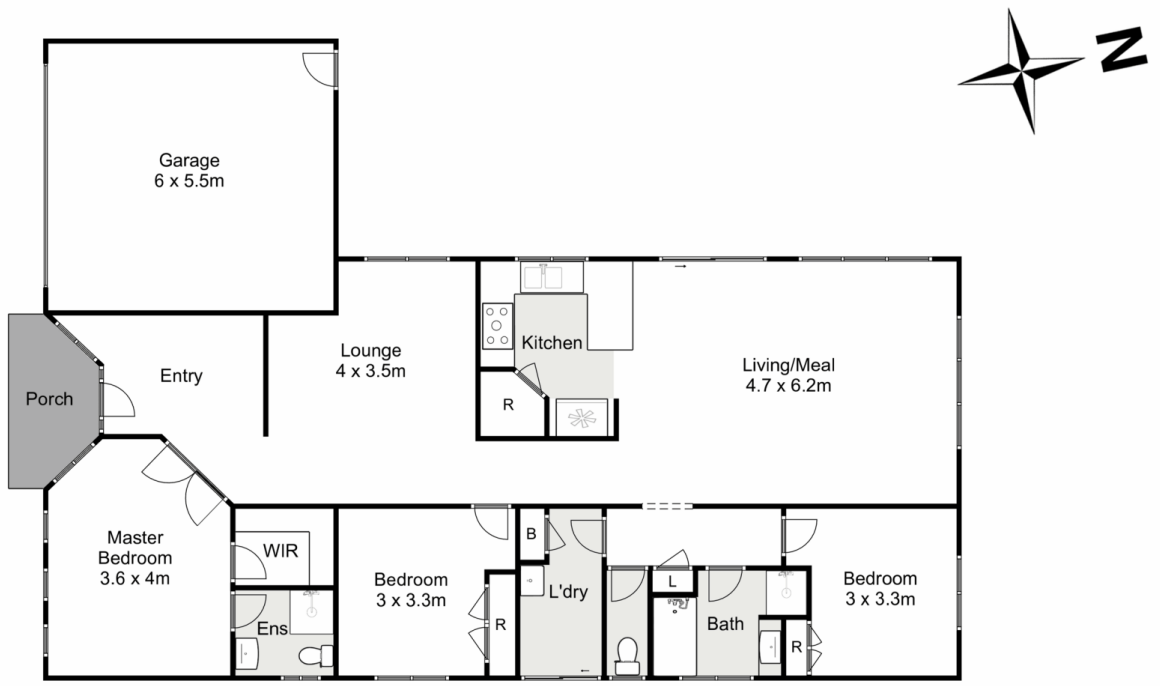
this stunning property offers a versatile floorplan which includes a sizeable master suite optioned with en-suite and walk in wardrobe, whilst the remaining two bedrooms feature built-in robes and serviced by a bright central bathroom with separate toilet.

This home was built to suit the growing family and comprises of: a formal living zone and spacious family dining area, overseen by the beautiful kitchen, fitted with an abundance of cupboard and bench space, large pantry

Price : \$ 554,000
Land Size : 571 sqm
View : <https://www.ypa.com.au/7400312>



Mark Edwards
0422 017 068



20 Turpentine Road, Brookfield



Whilst every attempt has been made to ensure the accuracy of the floor plan contained here, measurements of doors, windows, rooms and any other items are approximate and no responsibility is taken for any error, omission, or mis-statement. This plan is for illustrative purposes only and should be used as such by any prospective purchaser. The services, systems and appliances shown have not been tested and no guarantee as to their operability or efficiency can be given.

