



3 Arcadia Drive Weir Views VIC

4 2 2

This exciting piece of modern day architecture, positioned in a highly sought-after new pocket of Weir Views with a brand new shopping complex and beautiful parklands with upcoming schools and more parklands, this stunning home has to be completed to the true definition of luxury with incredible inclusions and upgrades, this stunning build is a must see due to the level of quality throughout.

Upon entering this stunning home you are welcomed by a light-filled master bedroom which is complete with a beautiful ensuite and large walk in robe. Moving through to the heart of the home there is a large kitchen which features stone benchtop, 900mm oven & cooktop, walk in pantry and ample bench space. This stunning kitchen overlooks the generously sized dining and living area which is drenched in ample light from the large windows.

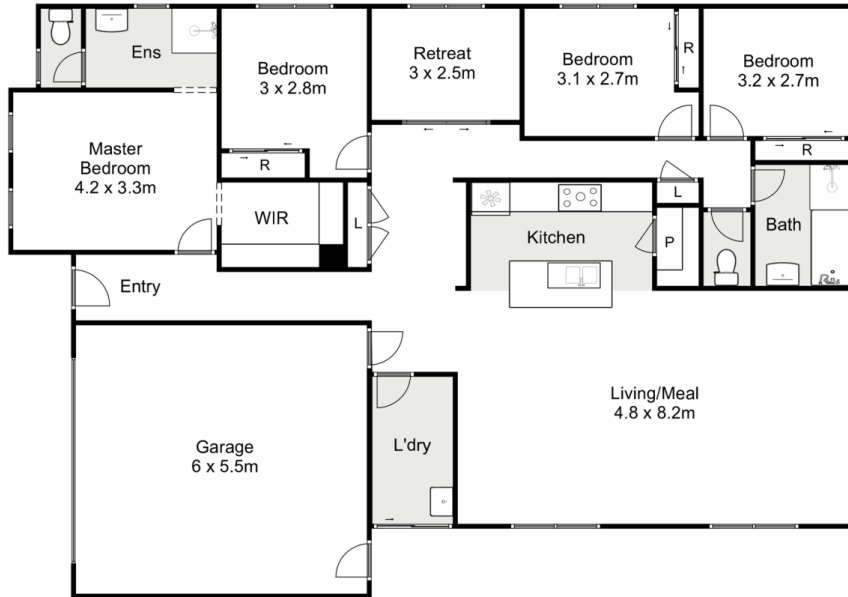
Price : \$ 630,000
Land Size : 448 sqm
View : <https://www.ypa.com.au/7400285>



Ryan Anders
0434 900 300



Kate McGlone
0401 853 244



3 Arcadia Drive, Weir Views

ypa

Whilst every attempt has been made to ensure the accuracy of the floor plan contained here, measurements of doors, windows, rooms and any other items are approximate and no responsibility is taken for any error, omission, or mis-statement. This plan is for illustrative purposes only and should be used as such by any prospective purchaser. The services, systems and appliances shown have not been tested and no guarantee as to their operability or efficiency can be given.

