

89 Aruma Avenue Harkness VIC

4  2  2 

This outstanding upgraded family home is perfectly located in the highly sought-after Willandra Estate in Harkness within close proximity to school of all levels, shopping complexes, public transport, parklands, walking tracks and so much more, making it the ideal opportunity for families and first home buyers.

With instant curb appeal from the maintained front lawns to the retaining walls and gorgeous decking and aggregate exposed concrete leading you up to the front entrance you will fall in love with this property before you even walk in the door.

High ceilings, floating floorboards and a perfect colour palette welcome you into the home and flow throughout. The master bedroom situated at the front of the home is spacious and light filled featuring quality carpet, plantation

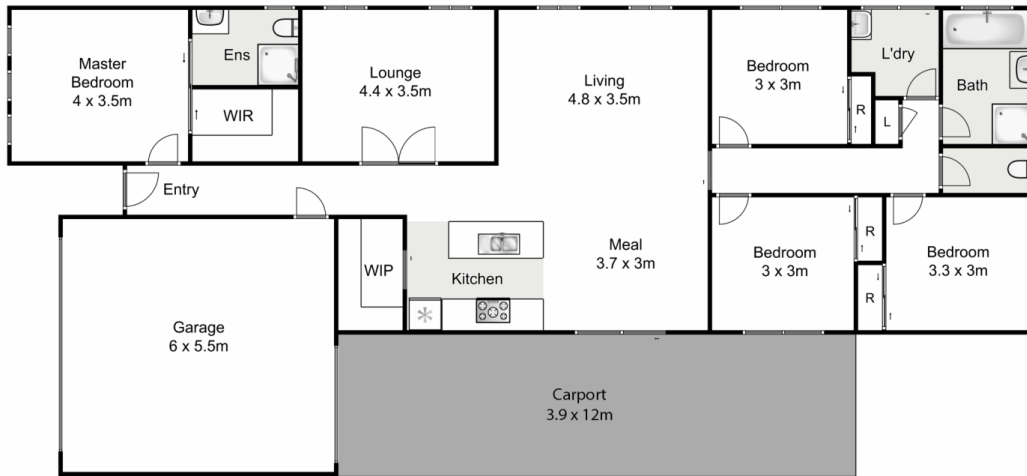
Price : \$ 640,000
Land Size : 459 sqm
View : <https://www.ypa.com.au/7400279>



Shane Spiteri
0488 980 115



Maddison Paans
0433 239 783



89 Aruma Avenue, Harkness

YPA

Whilst every attempt has been made to ensure the accuracy of the floor plan contained here, measurements of doors, windows, rooms and any other items are approximate and no responsibility is taken for any error, omission, or mis-statement. This plan is for illustrative purposes only and should be used as such by any prospective purchaser. The services, systems and appliances shown have not been tested and no guarantee as to their operability or efficiency can be given.

