



111 Rees Road Weir Views VIC

4 2 2

This beautiful family home is situated on a generous 560m² (approx.) allotment and perfectly located in the highly sought-after Toolern Waters Estate, within close proximity to schools, shops, Melton South Train Station, walking tracks and so much more, making it the ideal opportunity for families, first home buyers and investors alike.

Stepping into this impressive home you immediately appreciate the space on offer. The grand master bedroom features large his/hers walk in wardrobes and a spacious ensuite with oversized shower. The three remaining bedrooms are all generously sized, containing built in robes and are serviced by a bright central bathroom.

Moving through this well thought out home to the huge open plan living and dining area, which is overseen by the

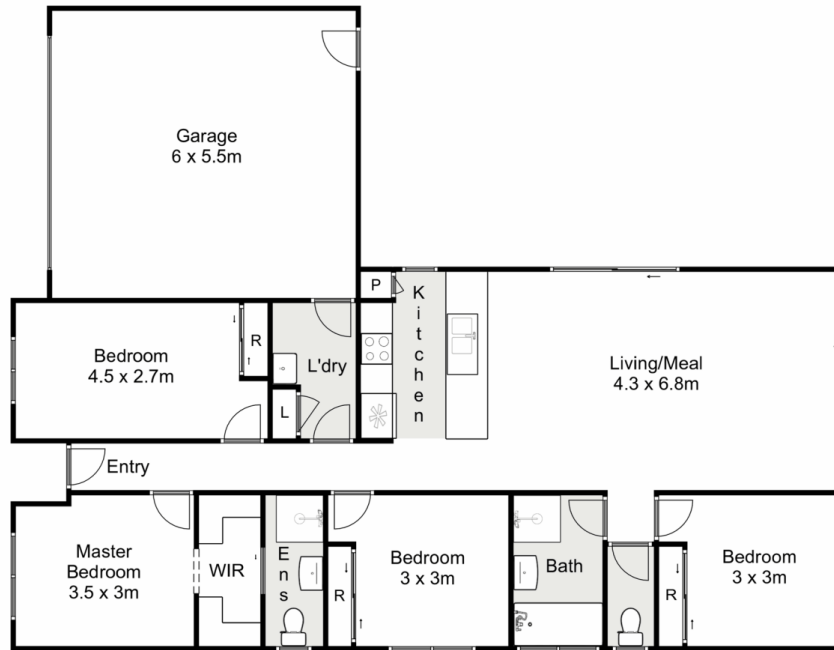
Price : \$ 592,000
Land Size : 560 sqm
View : <https://www.ypa.com.au/7400266>



Shane Spiteri
0488 980 115



Maddison Paans
0433 239 783



111 Rees Road, Weir Views

ypa

Whilst every attempt has been made to ensure the accuracy of the floor plan contained here, measurements of doors, windows, rooms and any other items are approximate and no responsibility is taken for any error, omission, or mis-statement. This plan is for illustrative purposes only and should be used as such by any prospective purchaser. The services, systems and appliances shown have not been tested and no guarantee as to their operability or efficiency can be given.

