

## 18 Christina Crescent Kurunjang VIC

4 🛏 2 🚿 2 🚗

This stunning home is situated in the heart of Kurunjang on a very generous allotment of 768m<sup>2</sup>(approx.), just moments away from all amenities, including public transport, schools of all levels, shopping, parklands, walking tracks, and easy freeway access. This wonderful property is a great opportunity to enter the property market, upsize or invest.

**Price** : \$ 650,000  
**Land Size** : 769 sqm  
**View** : <https://www.ypa.com.au/7400264>

The beautiful façade and meticulously manicured front lawn and garden guides you towards the front of the home welcoming you into this outstanding family domain. As you enter you are met by a huge front formal living area big enough to seat the whole family.

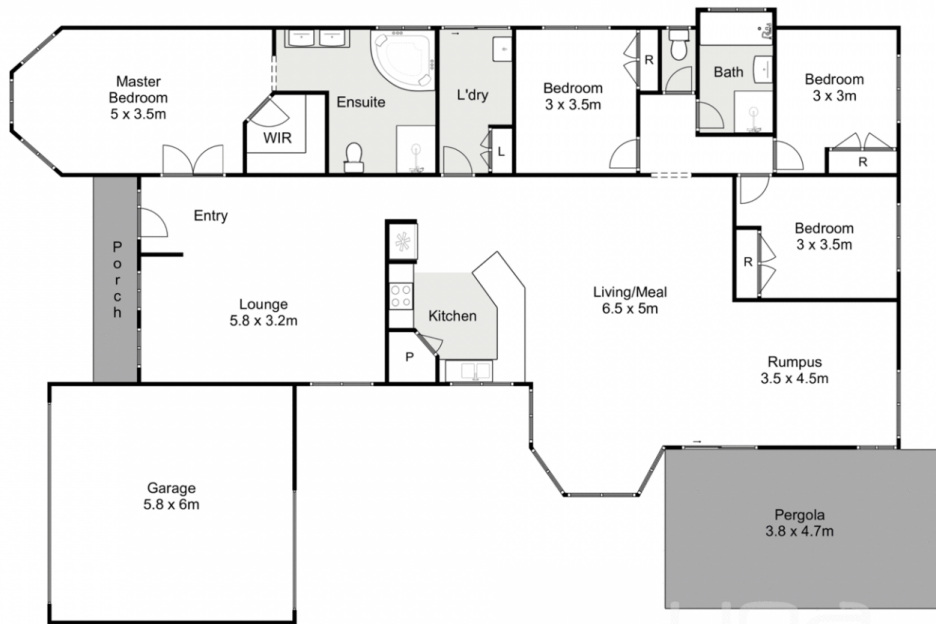


**Shane Spiteri**  
0488 980 115



**Ryan Anders**  
0434 900 300

Adjacent to this is the spacious master suite complete with a bay window area perfect for enjoying a morning coffee. A large walk-in robe offers ample storage space followed by



## 18 Christina Crescent, Kurunjang

Whilst every attempt has been made to ensure the accuracy of the floor plan contained here, measurements of doors, windows, rooms and any other items are approximate and no responsibility is taken for any error, omission, or mis-statement. This plan is for illustrative purposes only and should be used as such by any prospective purchaser. The services, systems and appliances shown have not been tested and no guarantee as to their operability or efficiency can be given.

