



23 Tawrrific Street Kurunjang VIC

4 2 2

Displaying an impressive blend of captivating modern features and contemporary style, this home makes for a sensational low maintenance family domain. Located in the heart of Kurunjang within short distance to the local zoned primary school, shopping complexes, sporting grounds, public transport and just a couple houses down from a huge reserve making this the ideal family location.

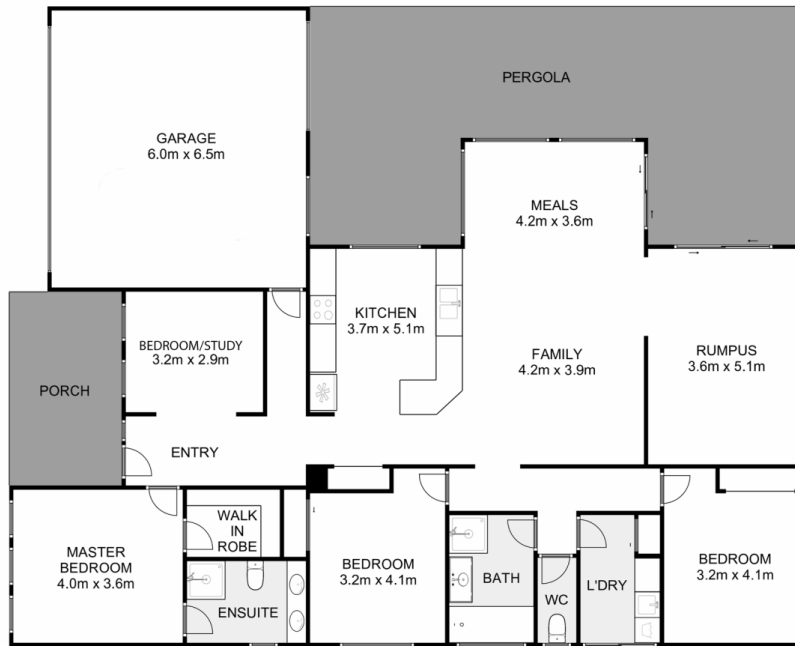
From the moment you walk in you will begin to picture your life in this gorgeous family home. The master bedroom situated at the front of the home offers a walk-in robe which is inclusive of built-in cabinetry and a stunning ensuite with large shower and double vanity.

The large study situated adjacent to the master bedroom offers the ideal space for a nursery or a fourth bedroom. The remaining bedrooms are all carpeted and generously

Price : \$ 625,000
Land Size : 568 sqm
View : <https://www.ypa.com.au/7400248>



Shane Spiteri
0488 980 115



23 Tawrrific Street, Kurunjang

ypa

Whilst every attempt has been made to ensure the accuracy of the floor plan contained here, measurements of doors, windows, rooms and any other items are approximate and no responsibility is taken for any error, omission, or mis-statement. This plan is for illustrative purposes only and should be used as such by any prospective purchaser. The services, systems and appliances shown have not been tested and no guarantee as to their operability or efficiency can be given.

