



14 Holman Crescent Bacchus Marsh VIC

4 2 2

This luxurious Exclusive Home built residence will surpass all expectations. Made up of quality, space and style this home has all the incredible factors you've been searching for with immaculately landscaped front gardens being the first point to impress.

Entering the residence, you are provided with an impressive prelude of immaculately designed elements featuring nine foot ceilings, upgraded skirting boards, hybrid flooring and more, also conveying a multitude of entertaining and relaxation areas.

Oversized master suite comprising of a generous walk in wardrobe, stunning ensuite featuring floor to ceiling tiles with feature black tile in the oversized shower, double vanity, stone bench tops and bulkhead over the vanity. Remaining three bedrooms are massive in size and all

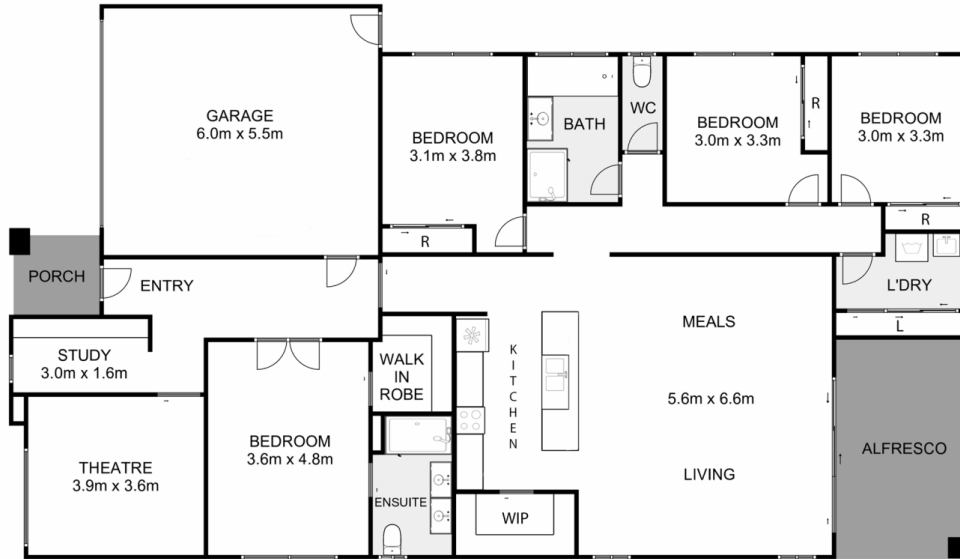
Price : \$ 700,000
Land Size : 434 sqm
View : <https://www.ypa.com.au/7400246>



Shane Spiteri
0488 980 115



Ryan Anders
0434 900 300



14 Holman Crescent, Bacchus Marsh

Ypa

Whilst every attempt has been made to ensure the accuracy of the floor plan contained here, measurements of doors, windows, rooms and any other items are approximate and no responsibility is taken for any error, omission, or mis-statement. This plan is for illustrative purposes only and should be used as such by any prospective purchaser. The services, systems and appliances shown have not been tested and no guarantee as to their operability or efficiency can be given.

