



## 158 Exford Road Melton South VIC

4 2 2

Conveniently located in Melton South close to the brand new Opalia Shopping Complex, recently renovated Station Square Shopping Complex, Melton South Train Station, bus stops, sporting facilities and all levels of schooling, this wonderful family home is one not to be missed out on. Situated on a large 611m<sup>2</sup>(approx.) block, this property has plenty of space on offer.

Entering this beautiful residence you are welcomed by a large formal living area adjacent to the generously sized master bedroom which is complete with a stunning ensuite and spacious walk-in robe. Moving through to the heart of the home the kitchen boasts 20mm stone benchtops, stainless steel appliances, walk-in pantry and ample bench and cupboard space. This overlooks the large open plan meals and living zone. The three remaining bedrooms are all large with built in robes and are serviced by a bright and

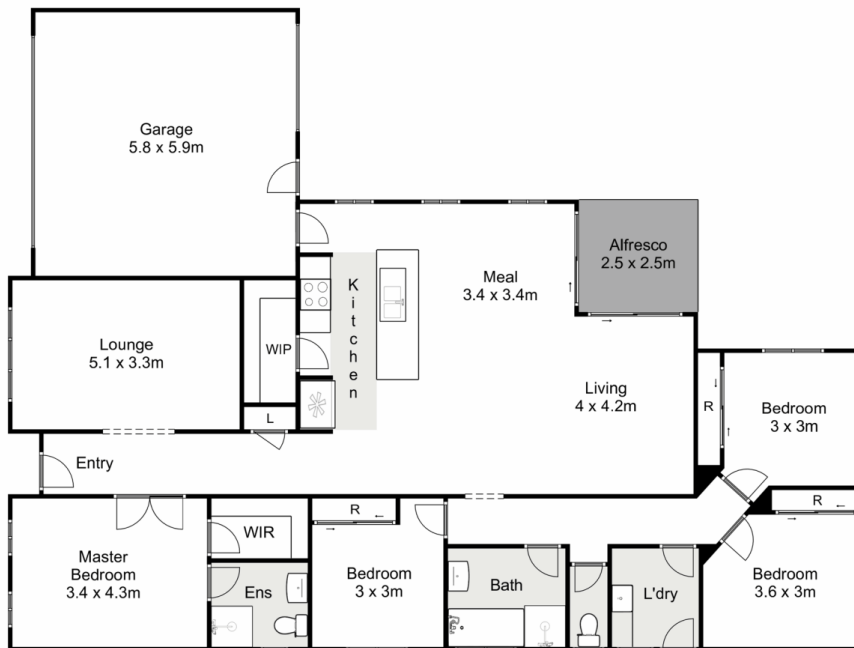
**Price** : \$ 636,000  
**Land Size** : 611 sqm  
**View** : <https://www.ypa.com.au/7400242>



**Shane Spiteri**  
0488 980 115



**Ryan Anders**  
0434 900 300



## 158 Exford Road, Melton South

Ypa

Whilst every attempt has been made to ensure the accuracy of the floor plan contained here, measurements of doors, windows, rooms and any other items are approximate and no responsibility is taken for any error, omission, or mis-statement. This plan is for illustrative purposes only and should be used as such by any prospective purchaser. The services, systems and appliances shown have not been tested and no guarantee as to their operability or efficiency can be given.

