



## 17 Sovereign Boulevard Melton West VIC

4 🏠 2 🚗 2 🚗

This gorgeous quality home is ideally located on a huge allotment of 834m<sup>2</sup> (approx.) in the heart of the Sovereign Gardens Estate in Melton West being in close proximity to schools, public transport, shops, parks and more. This immaculately cared for family domain showcases many upgrades and quality finishes sure to impress any lucky buyer.

**Land Size** : 834 sqm  
**View** : <https://www.ypa.com.au/7400232>

Walking into this stunning family home you will be instantly impressed by the grand double door entry into the large entry hall featuring 9-foot ceilings, upgraded cornices and tiles throughout. The formal lounge and fourth bedroom/study sit adjacent to each other at the front of the home both featuring detailed arch entries and large bay windows providing ample light.

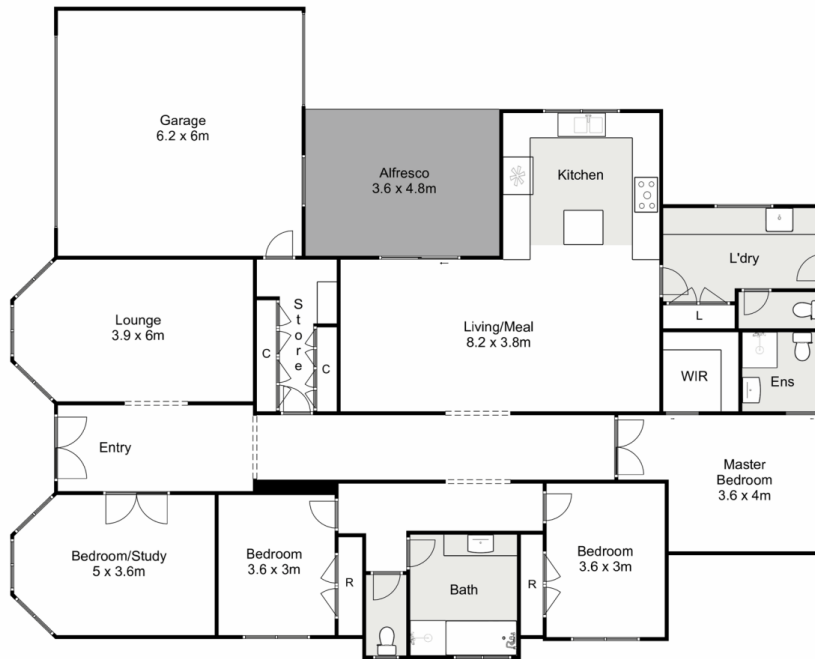


**Shane Spiteri**  
0488 980 115



**Mark Edwards**  
0422 017 068

Moving through the home there is a large and spacious



## 17 Sovereign Boulevard, Melton West

ypa

Whilst every attempt has been made to ensure the accuracy of the floor plan contained here, measurements of doors, windows, rooms and any other items are approximate and no responsibility is taken for any error, omission, or mis-statement. This plan is for illustrative purposes only and should be used as such by any prospective purchaser. The services, systems and appliances shown have not been tested and no guarantee as to their operability or efficiency can be given.

