



107 Long Tree Drive Harkness VIC

4 2 2

This beautiful family home is situated on a generous 640m² (approx.) allotment and perfectly located in the highly sought after Arnold's Creek Estate in Harkness within close proximity to schools, shops, public transport, parks, walking tracks and so much more, making it the ideal opportunity for families, first home buyers and investors alike.

Stepping in to this impressive quality home you are welcomed by a wide hallway, immediately appreciating the space on offer, the grand master bedroom features a large walk in wardrobe and a spacious renovated ensuite with floor to ceiling tiles and stone benchtops. The three remaining bedrooms are all generously sized, containing built in robes and are serviced by an equally impressive central bathroom.

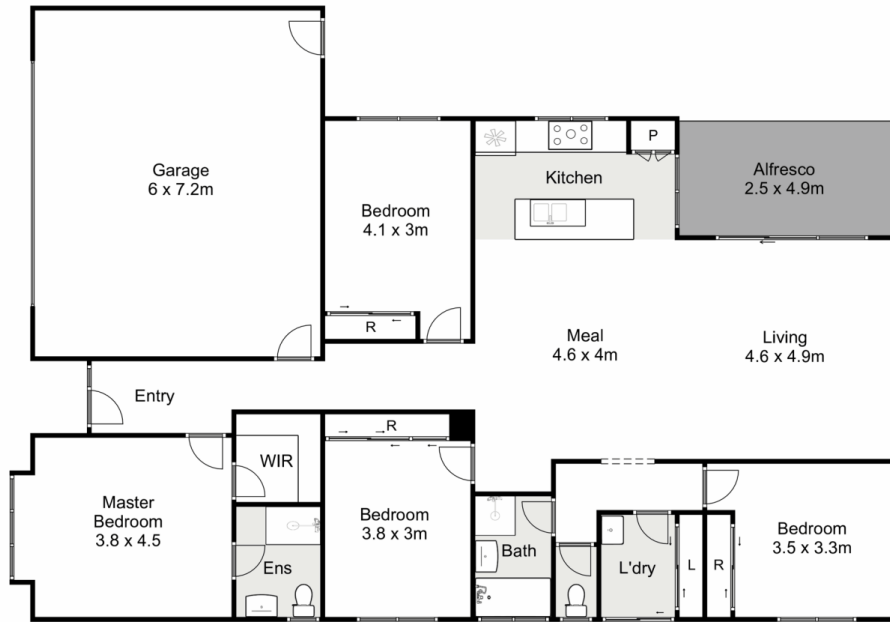
Price : \$ 600,000
Land Size : 640 sqm
View : <https://www.ypa.com.au/7400211>



Shane Spiteri
0488 980 115



Mark Edwards
0422 017 068



107 Long Tree Drive, Harkness

Ypa

Whilst every attempt has been made to ensure the accuracy of the floor plan contained here, measurements of doors, windows, rooms and any other items are approximate and no responsibility is taken for any error, omission, or mis-statement. This plan is for illustrative purposes only and should be used as such by any prospective purchaser. The services, systems and appliances shown have not been tested and no guarantee as to their operability or efficiency can be given.

