



22 Croxton Drive Kurunjang VIC

4 2 4

Located in an ideal quiet location situated on rare allotment of 6,898m² (approx.) sits this immaculate home that has been well loved and cared for since its establishment. This fantastic family domain would make the ideal opportunity for a family, wine lover, investor, tradie, car lover or trucking business with more than enough space to accommodate any kind of needs or equipment you may have!

This impressive property has been exceptionally designed and is a quality build on a conventional slab. The façade of this home is beautifully, with a veranda to front of the home and side entrance door giving it plenty of character and charm providing functionality with an asphalt driveway.

Walking into this sensational family domain you are greeted by a welcoming entry into a huge master bedroom,

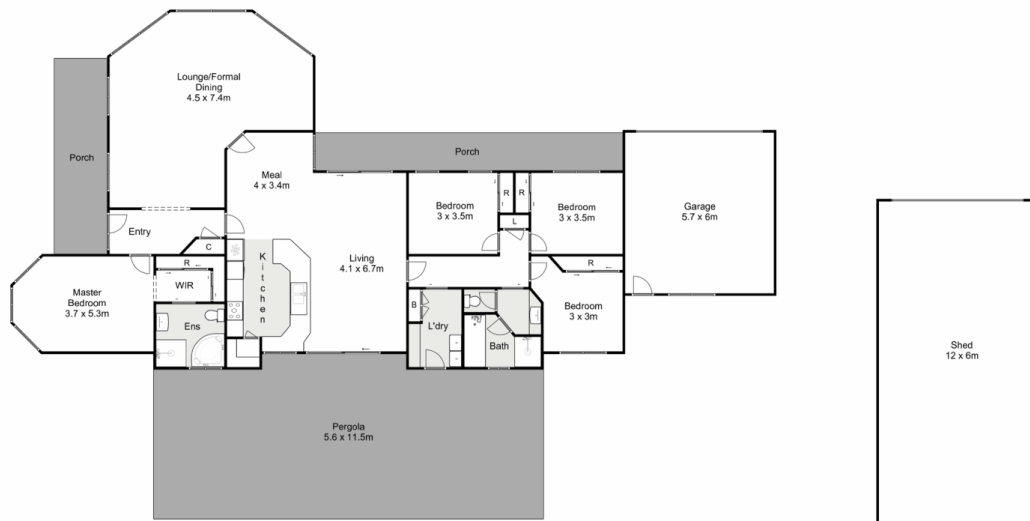
Price : \$ 1,251,000
Land Size : 6898 sqm
View : <https://www.ypa.com.au/7400205>



Shane Spiteri
0488 980 115



Ryan Anders
0434 900 300



22 Croxton Drive, Kurunjang

YPA

Whilst every attempt has been made to ensure the accuracy of the floor plan contained here, measurements of doors, windows, rooms and any other items are approximate and no responsibility is taken for any error, omission, or mis-statement. This plan is for illustrative purposes only and should be used as such by any prospective purchaser. The services, systems and appliances shown have not been tested and no guarantee as to their operability or efficiency can be given.

