



12 Headingley Grove Strathulloh VIC

4  2  2 

This stunning family home offers convenient living for owner occupiers and investors alike. Situated in the heart of the Atherstone Estate, in close proximity to sporting grounds, walking tracks, Cobblebank Train Station, shopping precinct & recently opened Cobblebank Primary School.

Upon entering this stunning home you are greeted by a wide entrance/hallway followed by a spacious master bedroom featuring a walk in robe and stunning modern ensuite with tiled shower base, stone benchtops and shower niche. The remaining three bedrooms all feature built in robes and are serviced by a beautiful central bathroom.

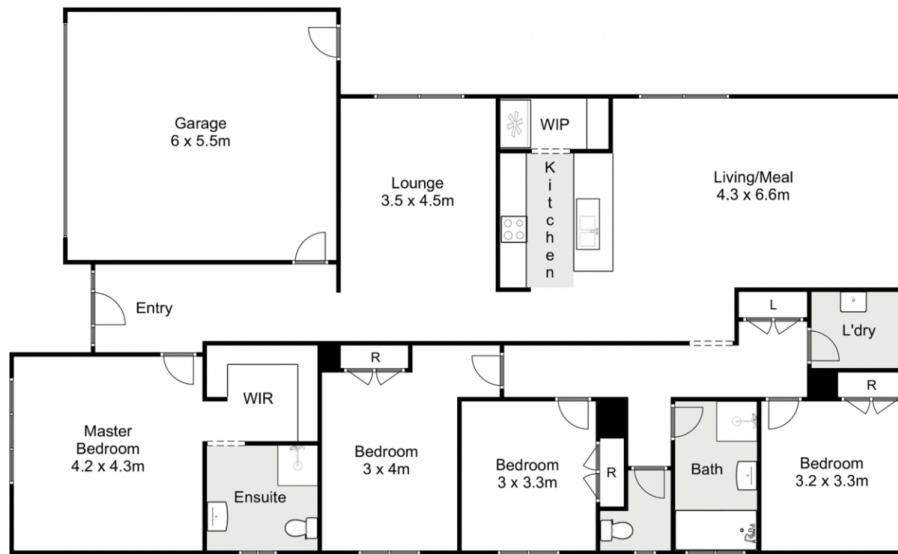
Moving through the home you will find a large formal lounge featuring an abundance of natural light. The heart of

Price : \$ 635,000

View : <https://www.ypa.com.au/7400185>



Kate McGlone
0401 853 244



12 Headingly Grove, Strathulloh

Whilst every attempt has been made to ensure the accuracy of the floor plan contained here, measurements of doors, windows, rooms and any other items are approximate and no responsibility is taken for any error, omission, or mis-statement. This plan is for illustrative purposes only and should be used as such by any prospective purchaser. The services, systems and appliances shown have not been tested and no guarantee as to their operability or efficiency can be given.

