



## 2 Margaret Court Kurunjang VIC

4 2 6

Displaying an impressive blend of captivating features and awe-inspiring architecture, the generous proportions of this home make for a sensational family domain. Located in a highly sought after pocket of Kurunjang, close by to all levels of schooling, public transport, local parks and freeway access, everything you need is at your doorstep.

Comprising of four bedrooms, two bathrooms, master bedroom with walk in robe and ensuite, whilst the remaining bedrooms are serviced by a bright central bathroom.

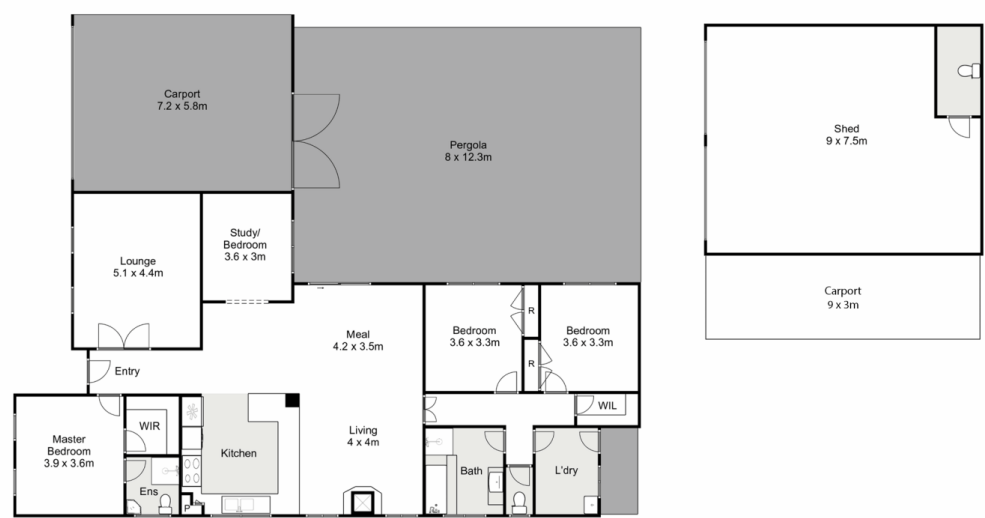
This home offers glamorous ambience throughout in combination with the light filled timber vaulted ceilings that tower over the open plan living and dining area.

The stunning timber kitchen provides endless benchspace

**Price** : \$ 596,100  
**Land Size** : 815 sqm  
**View** : <https://www.ypa.com.au/7400174>



**Mark Edwards**  
0422 017 068



## 2 Margaret Court, Kurunjang



Whilst every attempt has been made to ensure the accuracy of the floor plan contained here, measurements of doors, windows, rooms and any other items are approximate and no responsibility is taken for any error, omission, or mis-statement. This plan is for illustrative purposes only and should be used as such by any prospective purchaser. The services, systems and appliances shown have not been tested and no guarantee as to their operability or efficiency can be given.

