



## 12 Acumin Street Brookfield VIC

4 2 1

IMPORTANT - Any advertised open for inspections are the available private appointment times. All attendees must scan the QR Code provided at the property. Only registered attendees will be able to view the property, you MUST ensure you are registered to attend the private appointment. Inspections are permitted to a maximum of 10 people inside at any time, subject to the density quotient of 1 person per 4 sqm. All YPA Melton opens will be conducted in accordance with the current government requirements.

Take advantage of this stunning home, located on a corner block, in the heart of Brookfield directly across from the recreational reserve and close by to all amenities such as schools of all levels, public transport and freeway access.

This low maintenance open plan home has everything you

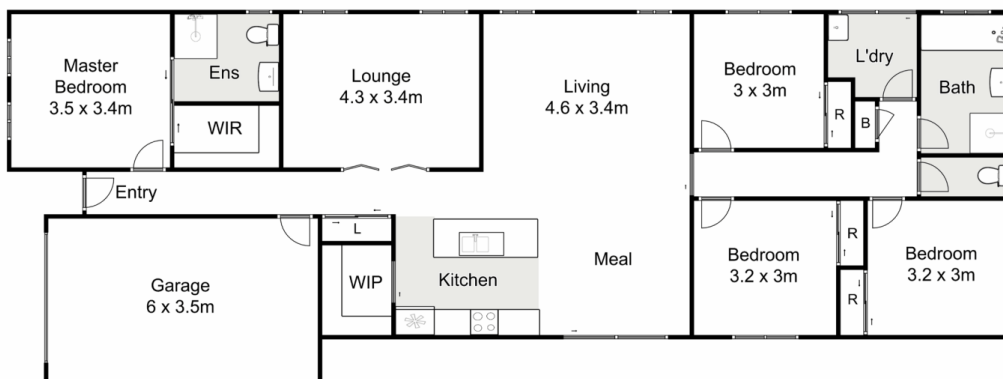
**Price** : \$ 470,000  
**Land Size** : 380 sqm  
**View** : <https://www.ypa.com.au/7400171>



**Shane Spiteri**  
0488 980 115



**Maddison Paans**  
0433 239 783



## 12 Acumin Street, Brookfield

ypa

Whilst every attempt has been made to ensure the accuracy of the floor plan contained here, measurements of doors, windows, rooms and any other items are approximate and no responsibility is taken for any error, omission, or mis-statement. This plan is for illustrative purposes only and should be used as such by any prospective purchaser. The services, systems and appliances shown have not been tested and no guarantee as to their operability or efficiency can be given.

