

9 Chelmsford Way Melton West VIC

4 2 2

Displaying an impressive blend of captivating features and awe-inspiring architecture, the generous proportions of this home make for a sensational family domain located in the highly sought area of Melton West, close to all levels on schooling, childcare, Woodgrove shopping centre, public transport and Melton Waves swimming pool.

Upon entry you are greeted with an impressive amount of living space which ensures room for the whole family, the beautiful kitchen not only appeals aesthetically but boasts a long list of appliances and fittings for the avid chef.

Comprising of four bedrooms, two bathrooms, master bedroom with walk in robe, en-suite, private balcony with doors from the master and all remaining bedrooms with built in robes and private access to balcony views.

Land Size : 749 sqm

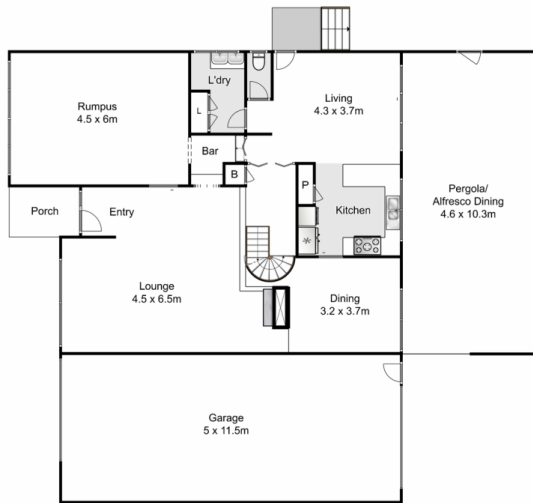
View : <https://www.ypa.com.au/7400139>



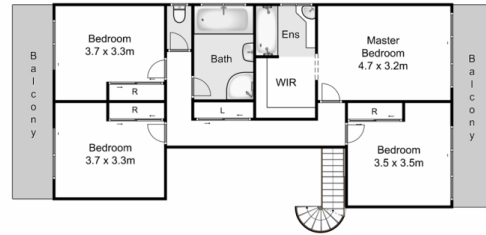
Shane Spiteri
0488 980 115



Maddison Paans
0433 239 783



Ground Floor



First Floor

9 Chelmsford Way, Melton West

ypa

Whilst every attempt has been made to ensure the accuracy of the floor plan contained here, measurements of doors, windows, rooms and any other items are approximate and no responsibility is taken for any error, omission, or mis-statement. This plan is for illustrative purposes only and should be used as such by any prospective purchaser. The services, systems and appliances shown have not been tested and no guarantee as to their operability or efficiency can be given.

