



## 50 Smoult Drive Kurunjang VIC

3 2 2

Situated on a large 651m<sup>2</sup> (approx.) parcel of land in a fantastic convenient location stands this gorgeous three-bedroom home with ample space for your large family. Within walking distance of local convenient stores and schools and only a short distance from shopping complexes, public transport, walking tracks and parks.

Comprising of three carpeted bedrooms, master with walk in robe and ensuite while the remaining bedrooms are spacious in size and all contain built in robes while serviced by a bright central bathroom.

The heart of the home features a spacious kitchen featuring a dishwasher, oven, cooktop and ample bench space. The kitchen perfectly incorporates the large separate family area and meals area, ideal for entertaining family and friends which all leads out to the large backyard.

The backyard is amazing in size with ample grass area for activities inclusive of drive through access and also a back

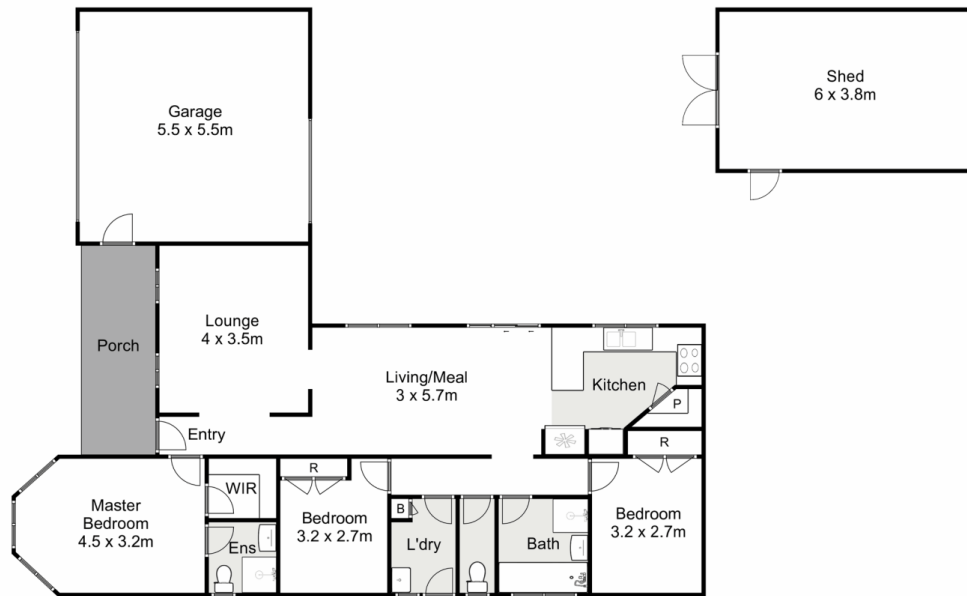
**Price** : \$ 460,000  
**Land Size** : 651 sqm  
**View** : <https://www.ypa.com.au/7400120>



**Shane Spiteri**  
0488 980 115



**Maddison Paans**  
0433 239 783



## 50 Smoult Drive, Kurunjang

YPA

Whilst every attempt has been made to ensure the accuracy of the floor plan contained here, measurements of doors, windows, rooms and any other items are approximate and no responsibility is taken for any error, omission, or mis-statement. This plan is for illustrative purposes only and should be used as such by any prospective purchaser. The services, systems and appliances shown have not been tested and no guarantee as to their operability or efficiency can be given.

