



6 Lawrence Avenue Harkness VIC

3  2  2 

This exciting piece of Melton real estate, built by Exclusive Homes and positioned in the highly sought-after pocket of Arnold's Creek Estate, Exclusive Gardens, boasts inclusions and finishes of the highest quality. Situated within walking distance to schools, shops, public transport, parks and walking tracks.

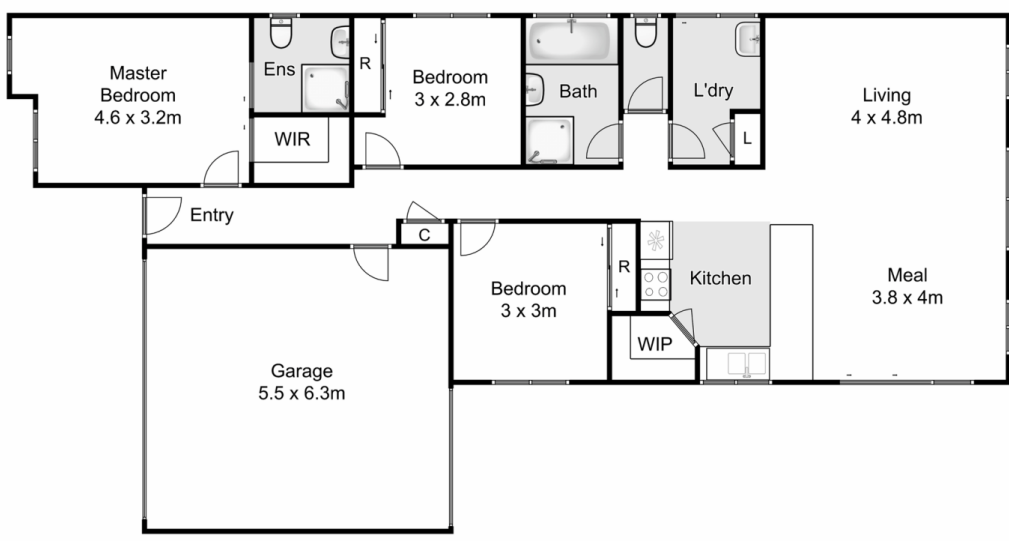
Consisting of three bedrooms with BIRs, master bedroom featuring WIR and stunning ensuite with bulk-head, stone bench tops and floor to ceiling tiles, whilst the remaining two bedrooms are serviced by a bright central bathroom featuring the same quality and upgrades as the ensuite.

The spacious light filled kitchen with stainless appliances, 600mm gas cooktop and lots of bench space perfectly incorporates the open plan living and dining areas.

Price : \$ 461,000
Land Size : 375 sqm
View : <https://www.ypa.com.au/7400111>



Mark Edwards
0422 017 068



6 Lawrence Avenue, Harkness



Whilst every attempt has been made to ensure the accuracy of the floor plan contained here, measurements of doors, windows, rooms and any other items are approximate and no responsibility is taken for any error, omission, or mis-statement. This plan is for illustrative purposes only and should be used as such by any prospective purchaser. The services, systems and appliances shown have not been tested and no guarantee as to their operability or efficiency can be given.

