



24 Toolern Street Melton South VIC

4  2  2 

This exciting piece of real estate offers buyers limitless potential, while still maintaining the signature charm of one of the town's most desirable areas, boasting a perfectly positioned block on a massive 1,561m² (approx.) allotment. Walking distance to Melton South Train Station, newly renovated Coles Shopping Complex, Melton South Primary School, speciality shops and more, the location is sure to suit everyone.

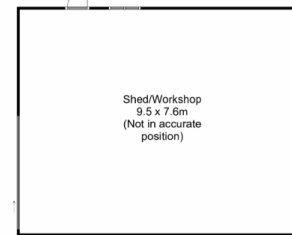
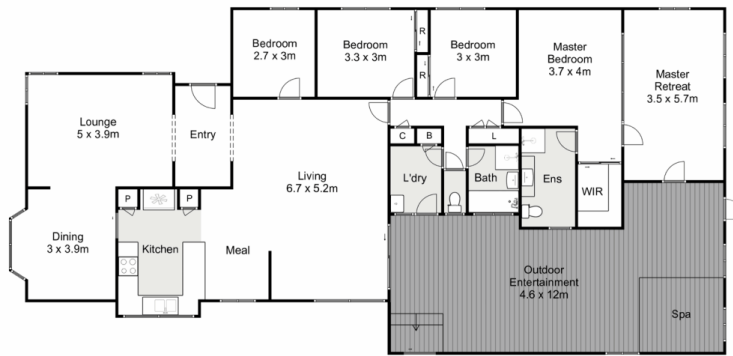
As you enter this immaculately maintained property, you are greeted by a spacious lounge room which flows onto a dining room, accompanied by a fully equipped kitchen with ample storage and upgraded appliances, overlooking the open plans meals and living area with two living area its creates plenty of room for the whole family. The home also features four generous sized bedrooms master of which contains a bright ensuite and massive retreat giving space

Land Size : 1561 sqm

View : <https://www.ypa.com.au/7400099>



Ryan Anders
0434 900 300



24 Toolern Street, Melton South

Ypa

Whilst every attempt has been made to ensure the accuracy of the floor plan contained here, measurements of doors, windows, rooms and any other items are approximate and no responsibility is taken for any error, omission, or mis-statement. This plan is for illustrative purposes only and should be used as such by any prospective purchaser. The services, systems and appliances shown have not been tested and no guarantee as to their operability or efficiency can be given.

