



## 7 Blairgowrie Place Melton West VIC

4 2 2

Situated in a court location in the heart of Melton West, with easy access to Woodgrove Shopping Centre, zoned schooling, public transport and parklands, this very large family friendly home sitting on a 693m<sup>2</sup> (approx.) land size provides comfortable living and space combined.

**Price** : \$ 490,000  
**Land Size** : 693 sqm  
**View** : <https://www.ypa.com.au/7400093>

Stepping into this warm and welcoming family home there sits a large living area, providing ample space for a growing family. This flows through to the well equipped kitchen that overlooks the cosy dining space which opens up to the spacious outdoor entertaining area. Downstairs also hosts one generously sized bedroom, powder room and a laundry with access to the backyard.

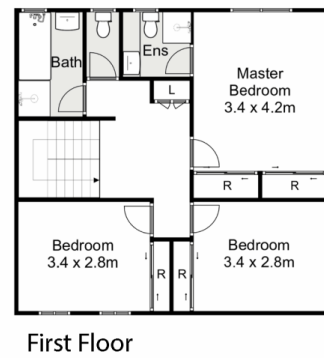
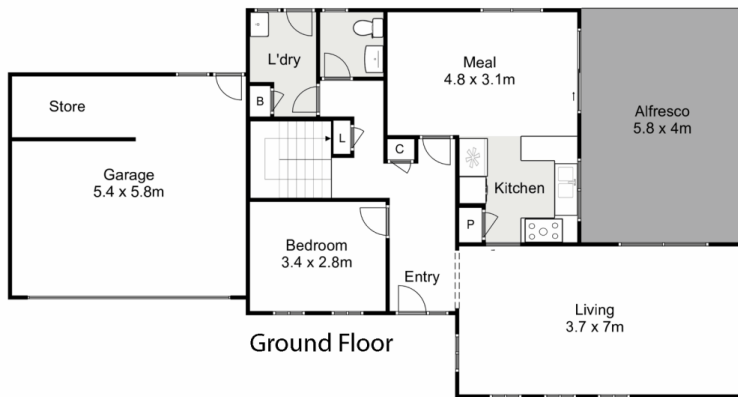


**Shane Spiteri**  
0488 980 115



**Kate McGlone**  
0401 853 244

Moving upstairs the master bedroom is generous in size with double built in robes and a bright ensuite. The two remaining bedrooms are both spacious and feature built in



## 7 Blairgowrie Place, Melton West

ypa

Whilst every attempt has been made to ensure the accuracy of the floor plan contained here, measurements of doors, windows, rooms and any other items are approximate and no responsibility is taken for any error, omission, or mis-statement. This plan is for illustrative purposes only and should be used as such by any prospective purchaser. The services, systems and appliances shown have not been tested and no guarantee as to their operability or efficiency can be given.

