



19 Karinya Way Harkness VIC

4 2 2

Perfectly located in the Willandra Estate close by to shops, bus stops, sporting facilities and schools for children, this wonderful family home is one not to be missed out on. This property has been well loved and immaculately cared for since its establishment and will make the perfect home for any growing family.

Upon entering this stunning modern home you are greeted by a formal living area which is large in size and provides ample space for a growing family and showcases feature three step corncing which continues throughout.

Moving through the home the impressive master bedroom is generously sized and showcases a stunning highly upgraded ensuite with double vanity, stone benchtops and huge shower with tiled shower base and niche.

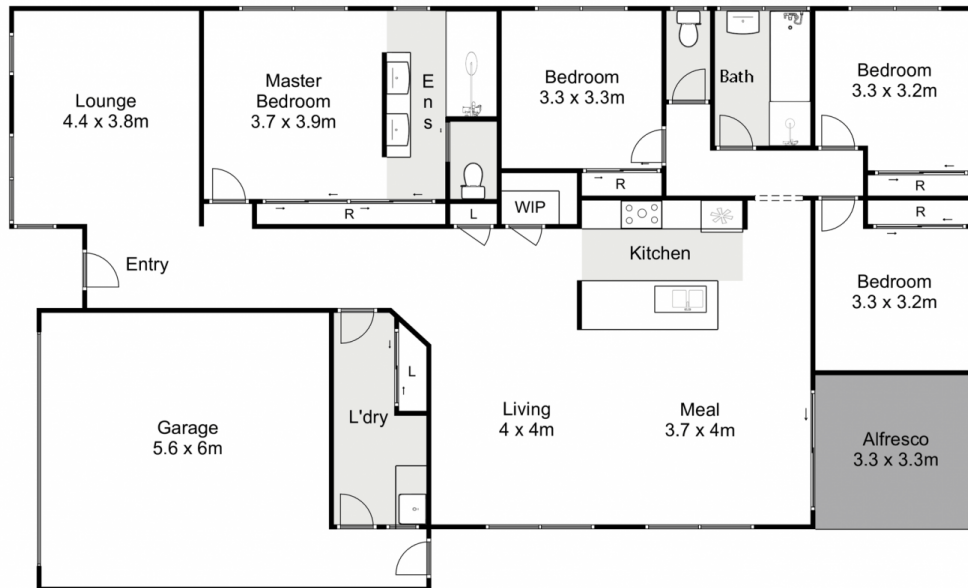
Price : \$ 555,000
Land Size : 446 sqm
View : <https://www.ypa.com.au/7400092>



Shane Spiteri
0488 980 115



Kate McGlone
0401 853 244



19 Karinya Way, Harkness

YPA

Whilst every attempt has been made to ensure the accuracy of the floor plan contained here, measurements of doors, windows, rooms and any other items are approximate and no responsibility is taken for any error, omission, or mis-statement. This plan is for illustrative purposes only and should be used as such by any prospective purchaser. The services, systems and appliances shown have not been tested and no guarantee as to their operability or efficiency can be given.

