



7 Taradale Crescent Fraser Rise VIC

4 🚗 2 🚗 2 🚗

With the new rental legislation in place, this property is the perfect opportunity with guaranteed rental return of 7% p/a for a two year period. Situated in the beautiful Aspire Estate in Fraser Rise, within close proximity to shops, schools, public transport and parklands, this stunning GJ Gardner display home is highly upgraded with high end finishes throughout sure to impress any buyer.

Stepping in to this gorgeous modern family home you are greeted by a generously sized formal living room providing plenty of space for the family.

The grand master bedroom features a stunning timber feature wall and pendant lighting and is accompanied by a large walk in robe with built in storage and a stylish ensuite featuring double vanity, floor to ceiling tiles, stone benchtop, large tile base shower and waterfall shower

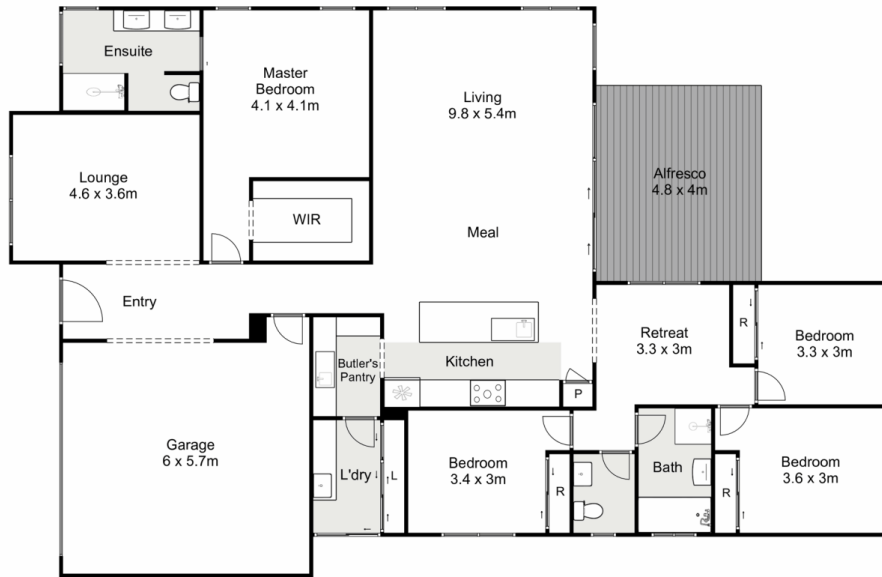
Price : \$ 785,000
Land Size : 512 sqm
View : <https://www.ypa.com.au/7400086>



Shane Spiteri
0488 980 115



Kate McGlone
0401 853 244



7 Taradale Crescent, Fraser Rise

YPA

Whilst every attempt has been made to ensure the accuracy of the floor plan contained here, measurements of doors, windows, rooms and any other items are approximate and no responsibility is taken for any error, omission, or mis-statement. This plan is for illustrative purposes only and should be used as such by any prospective purchaser. The services, systems and appliances shown have not been tested and no guarantee as to their operability or efficiency can be given.

