



17 Prahn Court Brookfield VIC

4 2 2

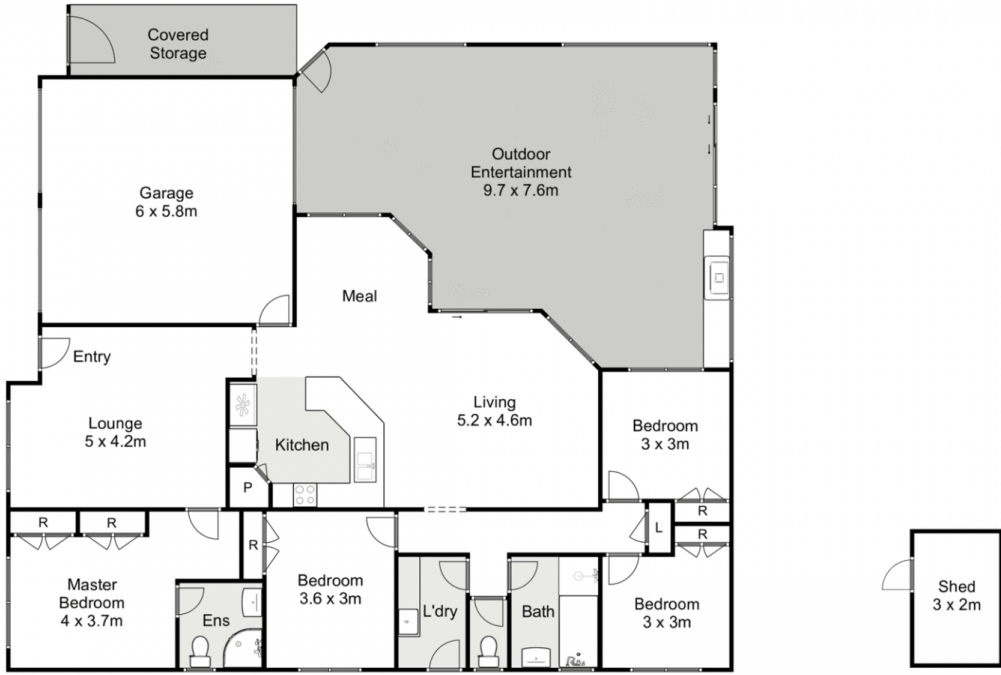
Situated on a generous 736m² (approx.) allotment, in a quiet tree lined court in one of Brookfields most picturesque and sought after areas, this property is sure to impress all buyers. Being within close proximity to parks, shops, walking tracks, public transport and zoned schools, this property offers not only a perfect family living environment but a wonderful area to enjoy all that the beautiful Brookfield community has to offer.

This stunning family home provides space for a growing family with upgrades and modern finishes throughout. Stepping in to the home you are greeted by a wide entry hall featuring stylish wallpaper which opens up to the spacious formal living zone providing ample space for the family to enjoy. This seamlessly flows through to the large master bedroom containing double built in robes and a large modern ensuite.

Price : \$ 620,000
Land Size : 736 sqm
View : <https://www.ypa.com.au/7400085>



Kate McGlone
0401 853 244



17 Prah Court, Brookfield



every attempt has been made to ensure the accuracy of the floor plan contained here, measurements of doors, windows, rooms and any other items are approximate and no responsibility is taken for any error, omission, or mis-statement. an is for illustrative purposes only and should be used as such by any prospective purchaser. The services, systems and appliances shown have not been tested and no guarantee as to their operability or efficiency can be given.

