



5 Denise Place Melton West VIC

4 🏠 2 🚗 6 🚗

Situated in a stunning court location, with easy access to Woodgrove shopping centre, zoned schooling and parklands, this very large family friendly home provides elite living and space combined.

Land Size : 841 sqm
View : <https://www.ypa.com.au/7400048>

With a gorgeous façade providing plenty of curb appeal, internally this property offers an extremely spacious and functional floor plan that ticks every box.



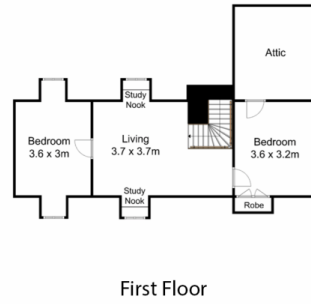
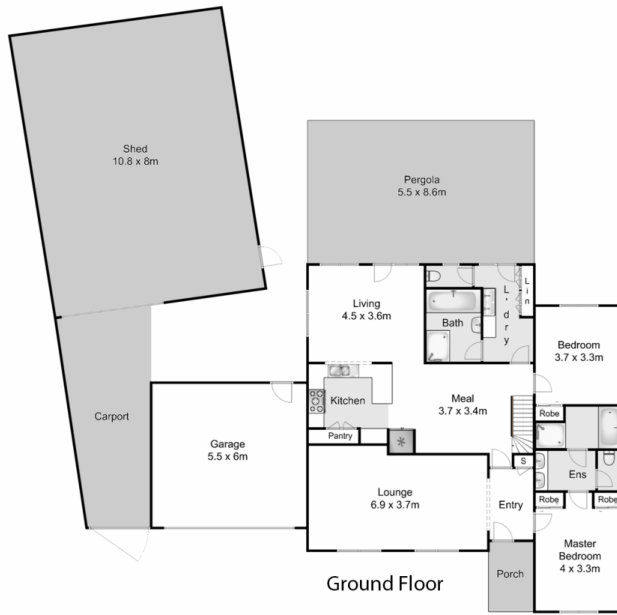
Shane Spiteri
0488 980 115



Maddison Paans
0433 239 783

This one-of-a-kind home comprises of three large living zones to accommodate any growing family, four bedrooms with built in robes, master bedroom comes complete with built in robe and a beautiful ensuite with double vanity and floor to ceiling tiles and a bright central bathroom with larger shower to service the remaining bedrooms.

The well-appointed kitchen which is further complimented by 900mm appliances, stone bench tops and ample



5 Denise Place, Melton West

YPA

Whilst every attempt has been made to ensure the accuracy of the floor plan contained here, measurements of doors, windows, rooms and any other items are approximate and no responsibility is taken for any error, omission, or mis-statement. This plan is for illustrative purposes only and should be used as such by any prospective purchaser. The services, systems and appliances shown have not been tested and no guarantee as to their operability or efficiency can be given.

