



## 353 Harkness Road Harkness VIC

4 2 2

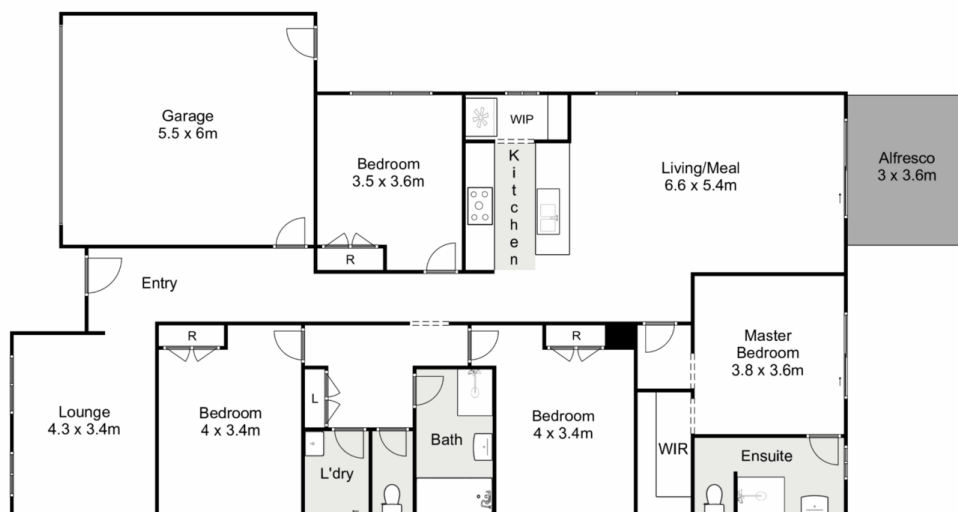
Perfectly positioned with uninterrupted views over the valley, this brand new dwelling is also close by to shops, bus stops, sporting facilities and schools, this wonderful family home is one not to be missed out on. Situated on a generous 490m2(approx.) block this home offers space for the whole family.

Entering this beautiful residence you are welcomed by a large formal lounge which flows on to the three massive bedrooms which are serviced by a bright modern bathroom. Moving through to the heart of the home there is a beautiful kitchen boasting stone benchtops, 900mm stainless steel appliances, walk-in pantry and ample bench and cupboard space. This overlooks the large open plan meals and living zone providing ample space for entertaining guests and accommodating the whole family. The huge master bedroom situated at the back of the

**Price** : \$ 580,000  
**Land Size** : 490 sqm  
**View** : <https://www.ypa.com.au/7400043>



**Shane Spiteri**  
0488 980 115



## 353 Harkness Road, Harkness

YPA

Whilst every attempt has been made to ensure the accuracy of the floor plan contained here, measurements of doors, windows, rooms and any other items are approximate and no responsibility is taken for any error, omission, or mis-statement. This plan is for illustrative purposes only and should be used as such by any prospective purchaser. The services, systems and appliances shown have not been tested and no guarantee as to their operability or efficiency can be given.

