



69 Long Tree Drive Harkness VIC

4 2 2

This beautiful family home is situated on a generous 610m² (approx.) allotment and perfectly located in the highly sought after Arnolds Creek Estate in Harkness within close proximity to schools, shops, public transport, parks, walking tracks and so much more, making it the ideal opportunity for families, first home buyers and investors alike.

Stepping in to this impressive quality home you are welcomed by a double door entry into the grand master bedroom featuring spacious ensuite and walk in robe. Moving through this perfect family floorplan there is a large formal living area providing ample space for the family which flows through to the huge open plan living and meals area that is overseen by a beautiful kitchen featuring stone benchtops, ample storage, stainless steel appliances, dishwasher and large walk in pantry. The three remaining

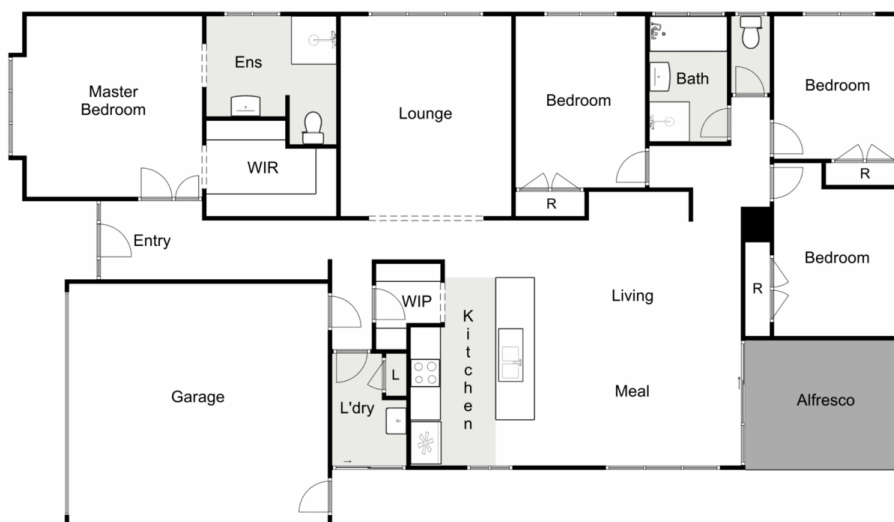
Price : \$ 531,000
Land Size : 611 sqm
View : <https://www.ypa.com.au/7400019>



Shane Spiteri
0488 980 115



Maddison Paans
0433 239 783



69 Long Tree Drive, Harkness

Ypa

Whilst every attempt has been made to ensure the accuracy of the floor plan contained here, measurements of doors, windows, rooms and any other items are approximate and no responsibility is taken for any error, omission, or mis-statement. This plan is for illustrative purposes only and should be used as such by any prospective purchaser. The services, systems and appliances shown have not been tested and no guarantee as to their operability or efficiency can be given.

