



7 Cherry Close Harkness VIC

4 2 2

Creatively and comprehensively renovated up to only the best of standards in quality and design so that it's entirely contemporary behind its original inviting façade. This sophisticated single level family home is conveniently located in a quiet court location close by to all amenities such as local shopping complexes, public transport, primary and high schools, parklands and walking tracks.

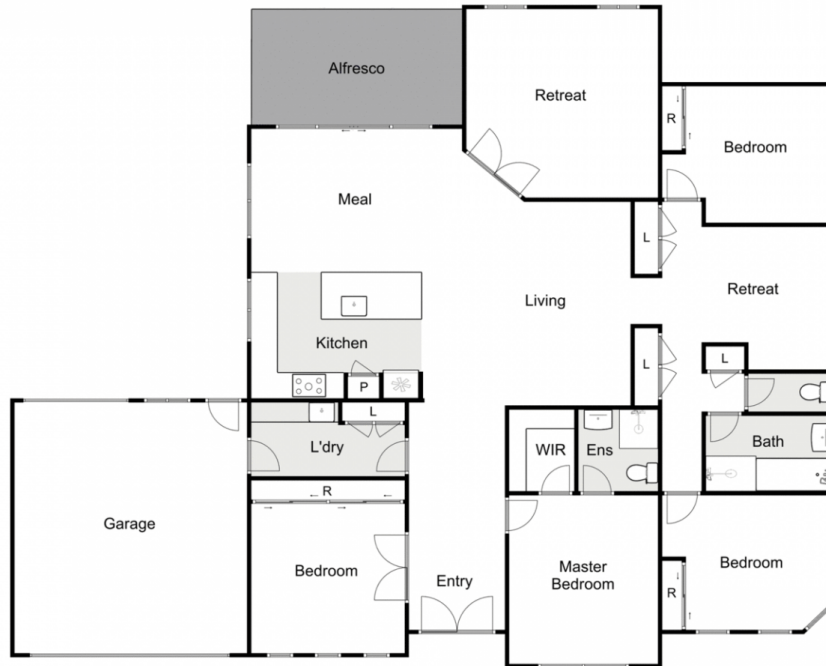
Luxurious living limited only by your imagination is what's on offer with strong appeal for families due to the extensive land size and spacious living zones on offer. Comprising of four generous sized bedrooms, the master including a sizeable walk in robe and stunning ensuite featuring floor to ceiling marble look porcelain tiles with black fixtures and fittings finished to only the highest of quality.

The remaining three bedrooms are all carpeted, open and bright equipped with built in robes and are serviced by a

Price : \$ 610,000
Land Size : 620 sqm
View : <https://www.ypa.com.au/7400004>



Shane Spiteri
0488 980 115



7 Cherry Close, Harkness

every attempt has been made to ensure the accuracy of the floor plan contained here, measurements of doors, windows, rooms and any other items are approximate and no responsibility is taken for any error, omission, or mis-statement. an is for illustrative purposes only and should be used as such by any prospective purchaser. The services, systems and appliances shown have not been tested and no guarantee as to their operability or efficiency can be given.

